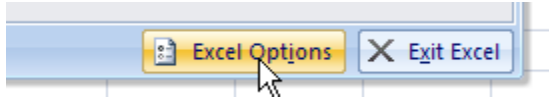
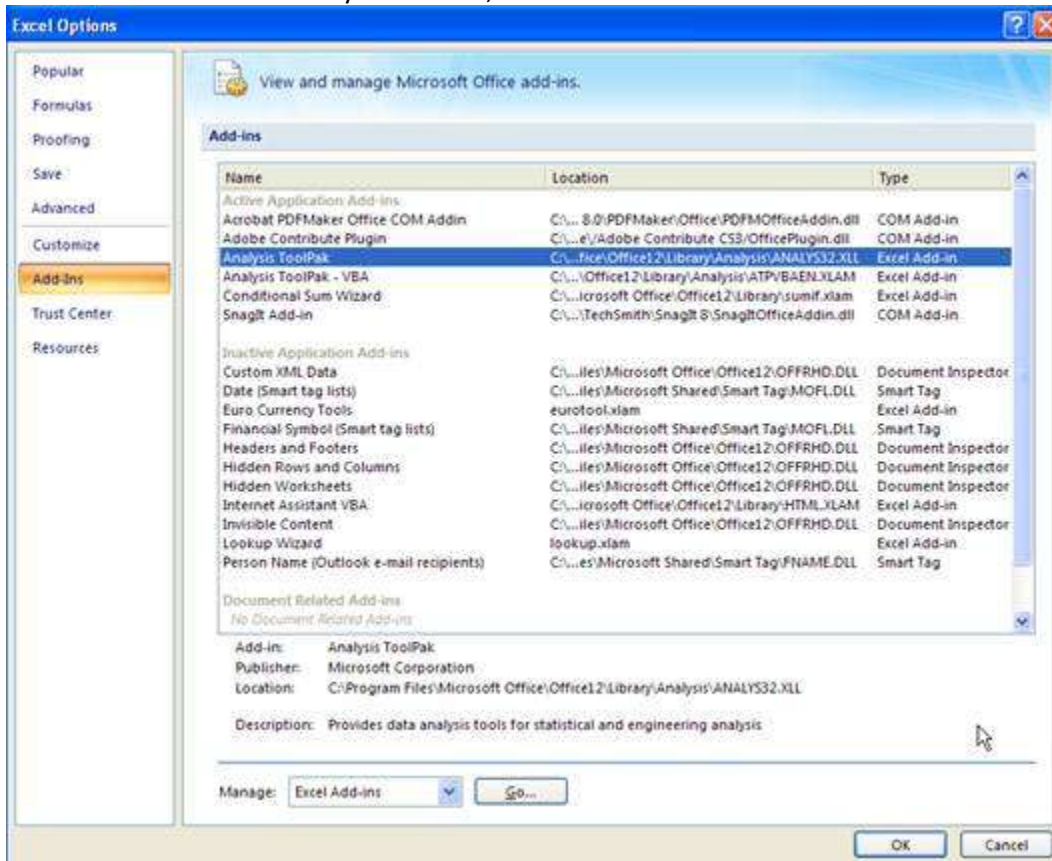


How to Activate the Analysis ToolPak in Excel 2007

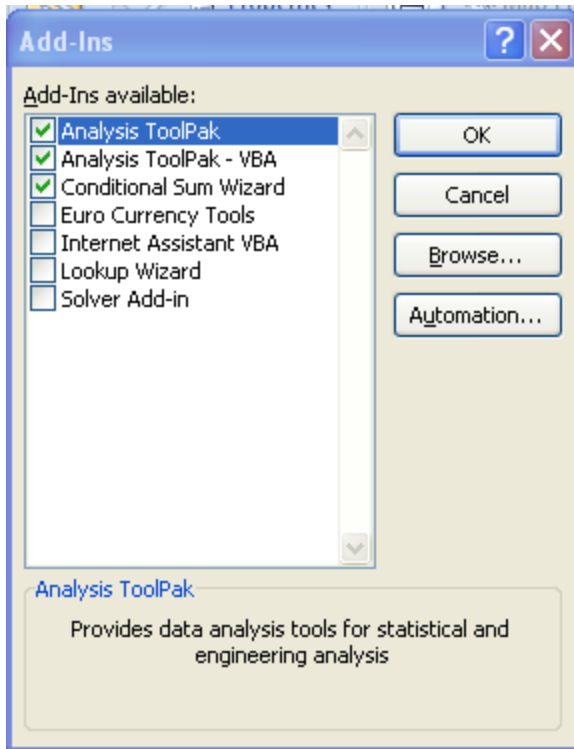
Click the Office Button in Excel 2007
Select Excel Options



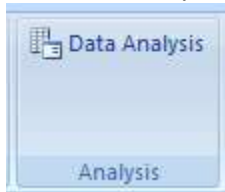
Click Add-Ins and select Analysis ToolPak, click Go



Make sure Analysis ToolPak is checked. That means it will load into memory.
Click OK



To use Regression Analysis, select the Data tab. At the end of the ribbon you will see Analysis group
Click Data Analysis



Choose the type of analysis you want. Click OK (you may have to select data first – I can't remember)

