

## Permanently Change AutoShape Defaults

---

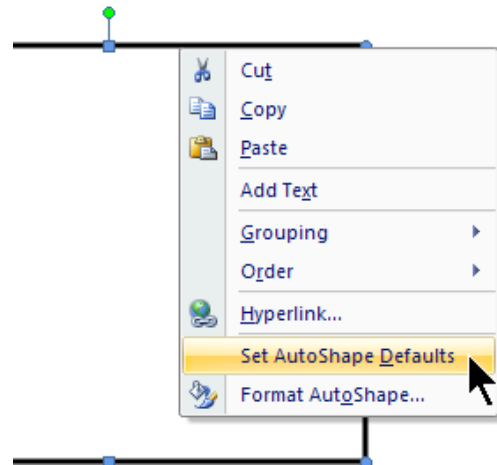
By now, you have probably found that Set AutoShape Defaults only works in the current document.

Start a new document or close and then start Word and the newly set default goes away.

The solution is to:

1. Open NORMAL.DOTM
2. Insert a shape, edit it to what you want, then set AutoShape defaults (Right click the shape to set AutoShape Defaults).
3. Delete the shape.
4. Save the template.

Make sure there is no typing or content in the document before you save it.



Here's where to get the template. Just substitute your own user name for mine:

