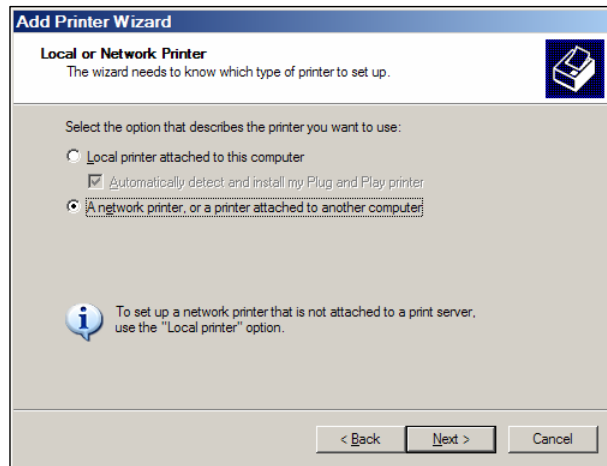


Printing From Your Laptop to a College Printer* Using Windows XP

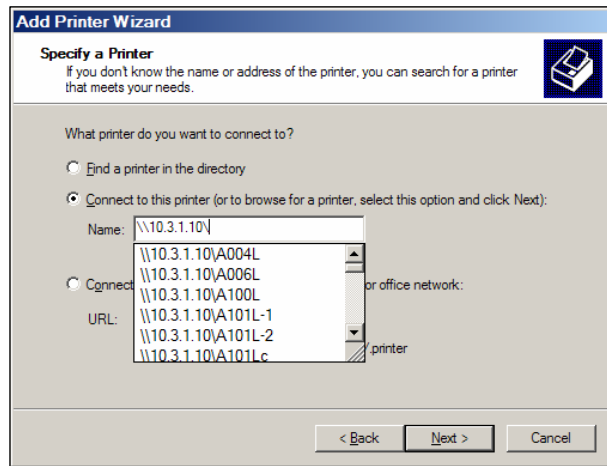
Adding the Proper Print Driver to Your Laptop

- From the Start Menu choose Settings/Printers and Faxes
- Under the File Menu or Printer Tasks, choose Add a printer
- In the Add Printer Wizard, press the [Next] button.
- Select “A Network Printer.....” radio button as shown and press the [Next] button.



- Select the “Connect to this printer....” radio button, type \\10.3.1.10\ in the Name: box and choose the desired printer. (HL200L for High Library lab. HL200L-2 for High Library main printer.)

- Press the [Next] button.
- Press the [Next] button.
- Press the [Finish] button.



Print your Document

- Print your document and select the proper printer.

Please note that it is only necessary to add the print driver to your laptop one time. For each successive print job, simply print the document and select the proper printer.

* If you are using the wireless network, you must use SSID-ETOWN_USER (not GUEST) if you want to connect to a college printer.