



Wireless Configuration Steps

Windows XP

Elizabethtown College

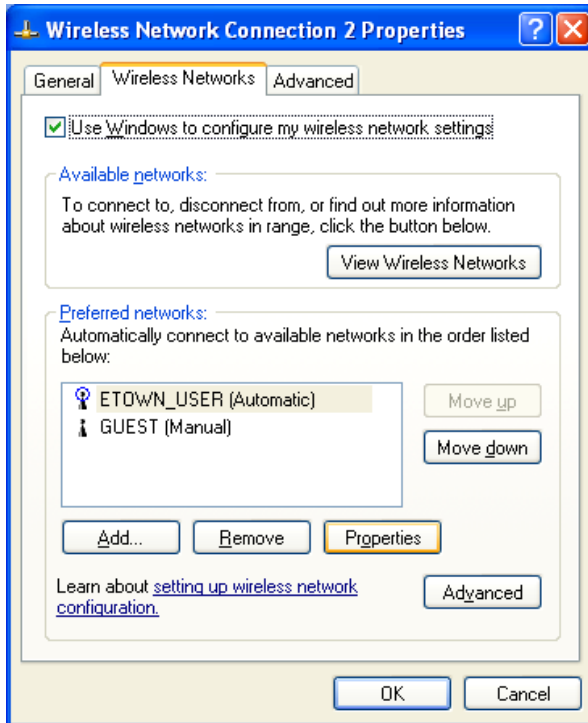
Revised: October 2, 2007



**** Please be sure to have the latest drivers installed for your wireless card. Go to your computer's manufacturer's website to obtain the latest drivers (i.e. Dell, HP, IBM, etc). ****

(To find out the type of wireless card you have, right click **My Computer** from the desktop and choose **Manage**. In the left pane click **Device Manager**. Find your wireless card in the right pane, usually under the section "Network Adapters.")

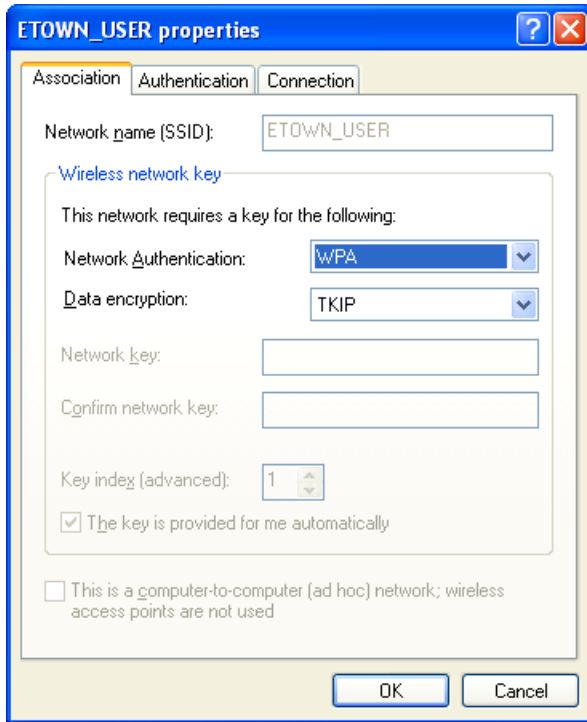
1. Right click **My Network Places** on the desktop and select **Properties**.
2. Right click your wireless adaptor and select **Properties**.
3. Select the **Wireless Networks** tab.



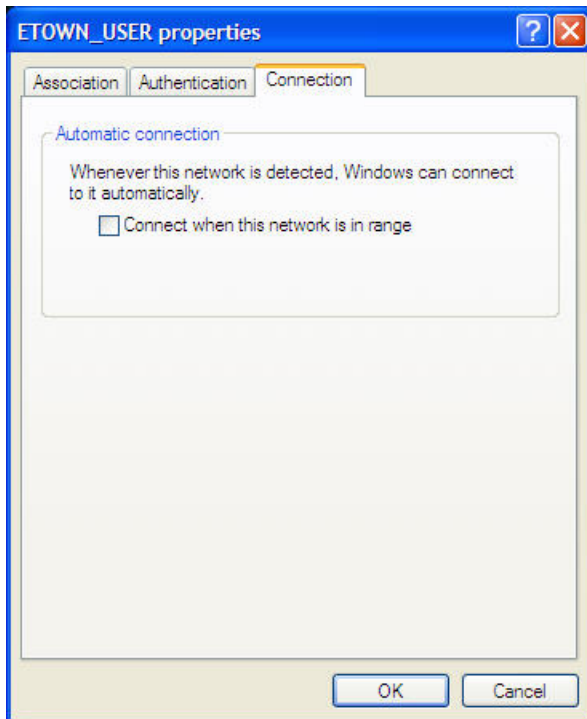
4.

** If you do not see the tab for **Wireless Networks**, Windows is not controlling your wireless configuration. Open the program configuration for your manufacturer's wireless (i.e. **Intel PROSet/Wireless**) and select the option to allow Windows to manage wireless (for the Intel program this is under **Advanced | Use Windows to manage Wi-Fi**). **

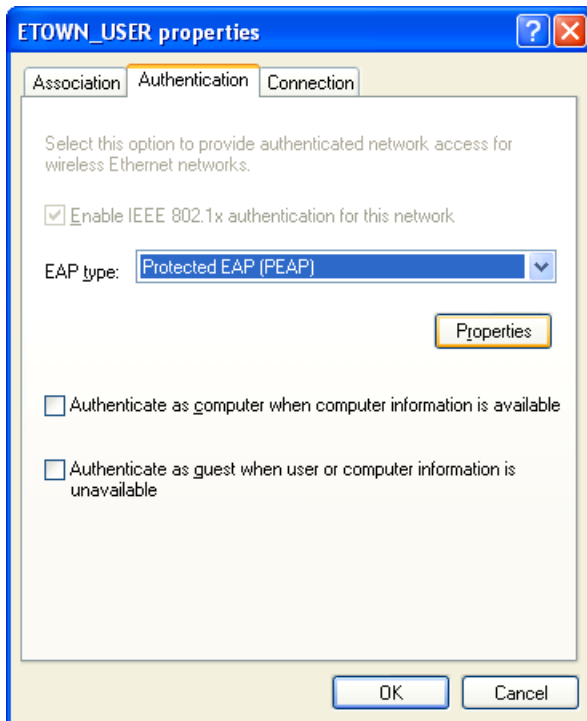
5. Under **Preferred Networks**, highlight **ETOWN_USER** and click **Properties**. (If **ETOWN_USER** does not show in this box, click **Add**, type the name and follow the instructions as they appear below.)



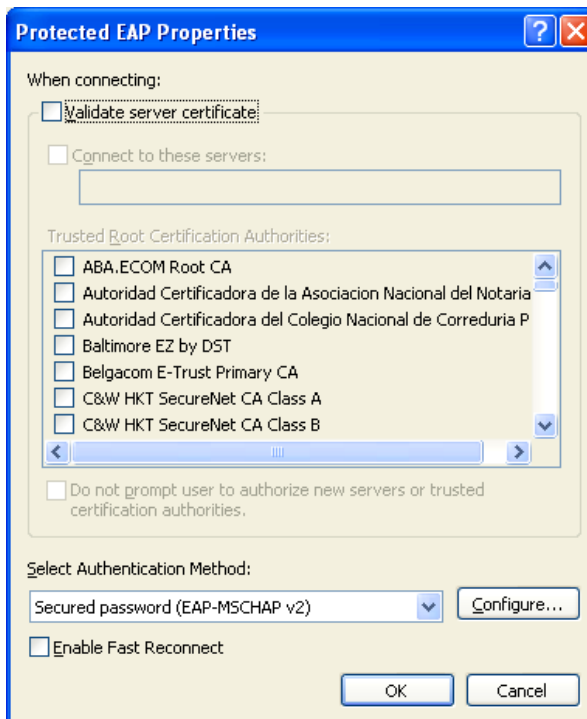
- 6.
7. On the **Association** tab, choose the shown authentication and encryption methods from the drop down menus.
8. On the **Connection** tab, be sure to clear the checkbox for “Connect when this network is in range.”



- 9.
10. On the **Authentication** tab, select the shown EAP type.



- 11.
12. Uncheck the box for “Authenticate as computer when computer information is available.”
13. Select the **Properties** button.

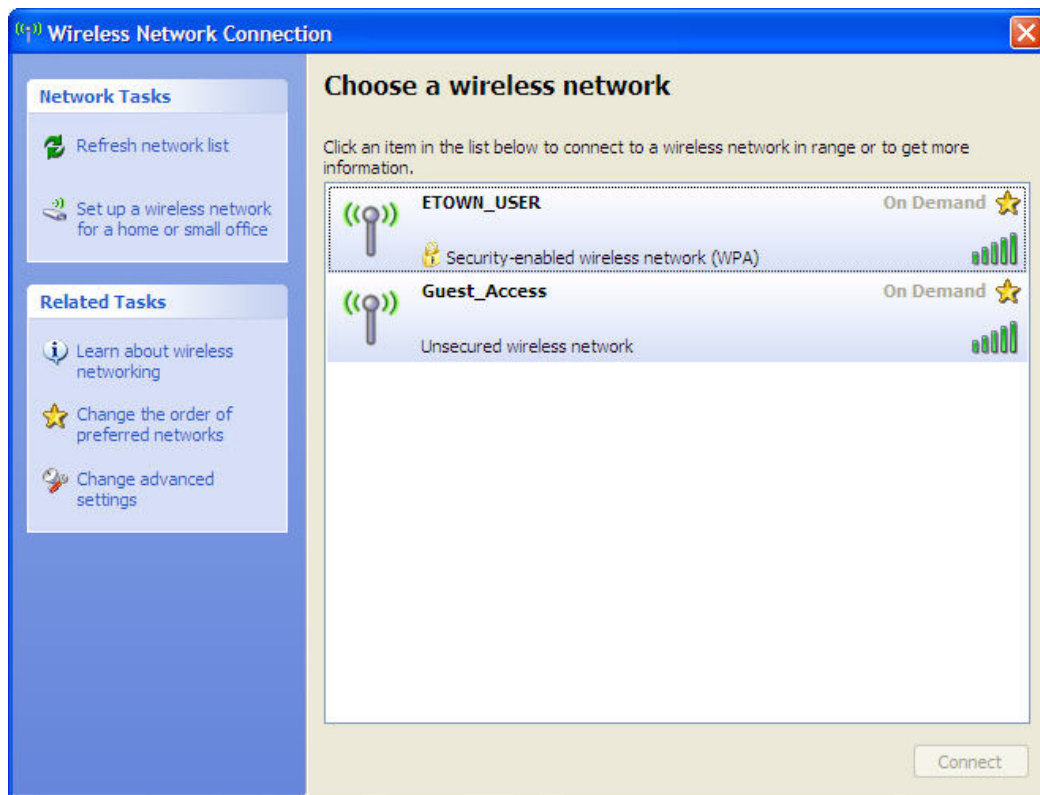


- 14.
15. On the **Protected EAP Properties** window, uncheck the box for “Validate server certificate.”
16. For **Select Authentication Method**, choose EAP-MSCHAP v2.

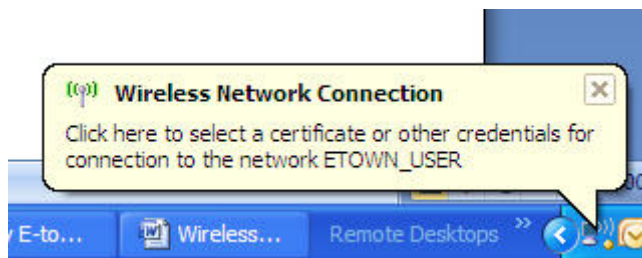
17. Click the **Configure** button. Un-check the box on the **EAP MSCHAPv2 Properties** window.



- 18.
19. Click OK on all open windows to complete the configuration.
20. On the **Network Connections** windows right-click your wireless adaptor and select **View Available Wireless Networks**.
21. Double-click **ETOWN_USER** to connect.



- 22.
23. You may see a bubble in your system tray asking you to login.



- 24.

25. Click this bubble if the **Enter Credentials** screen does not appear. On the **Enter Credentials** window enter your credentials as in the format below and click **OK**.



26.

**** Please keep in mind these credentials will be saved automatically to your machine once you enter them. If you have trouble connecting please contact the Elizabethtown College Help Desk x3333. ****

Continue instructions on the next page....

Register Your Computer

1. Go to <http://update.etown.edu/registration/> to download any security updates and install Symantec Antivirus and Ad-Aware Antispyware to protect your computer.
2. Follow the on screen instructions to complete the registration process and validate your computer.

Elizabethtown College Computer Registration

Before you Begin
The Department of Information & Technology Services has instituted a registration process for all computers on campus to help control the problems with viruses and vulnerable computers found in the past few years. You must complete the registration process before accessing network resources.

Step 1) Patch your Computer
The best step against viruses is to make sure your computer is fully patched with the latest updates.

- **Vista Only** - Go to <http://update.microsoft.com/> and download all critical updates.
- **XP Only** - If you are unsure if you have Windows XP Service Pack 2, click on "Start" then "Run". Enter "winver" (without the quotes) and press "OK". A window will pop-up with the service pack you have installed.
- **XP Only** - If you do not have Windows Service Pack 2, [click here to download the service pack](#).
- **XP Only** - If you have Windows Service Pack 2, go to <http://update.microsoft.com/> and download all critical updates.

Step 2) Protect your Computer
Every computer on the campus network is required to run Symantec Antivirus Corporate Edition.
To install this software, visit: <http://update.etown.edu/symantec.html>

Before continuing to Step 3, please ensure you have this software installed and the virus definitions are up to date. For instructions on updating your anti-virus, please visit <http://update.etown.edu/symantec.html>

Step 3) Install Anti-Spyware
ITS requires all student computers to run the Corporate Edition of Lavasoft's Ad-Aware.
To install this software, visit: <http://update.etown.edu/antispyware.html>

Please ensure you are running an up-to-date version of this software before continuing to Step 4. Help for this process can be found on the antispyware page at <http://update.etown.edu/antispyware.html>.

Step 4) Register your Computer
Computers connected to the network must be registered. Your computer must comply with steps one through three before you will be able to register your machine. Your computer will also need to be running Windows 2000, Windows XP, or Windows Vista. Failure to register will result in your computer being blocked from the network. To register, visit: <http://update.etown.edu/register.html>
ATTENTION: After you complete this step, you will need to return to this page (<http://update.etown.edu>) to complete steps 5 and 6.

Step 5) Map your Network Drives
Click on <http://update.etown.edu/mapnetworkdrives.exe> to get the map the network drives program, select "Save", and put the file on your desktop. To map the drives, double-click on this program and enter your JAYNET username and password.

Step 6) Restart your Computer
In order for these changes to take affect, you MUST restart your computer. If you are not able to visit websites outside of the college, please make sure you restart your computer.

More Information
Please note that continuing to keep your computer up-to-date is an essential part of protecting your computer and the entire campus network. It is important to periodically check for Updates or even set computers to automatically download and install the updates. Users should also scan their computers periodically for viruses using the Symantec Antivirus Corporate Edition.

3.