

Connecting to the Elizabethtown College Guest Wireless Network

A Windows XP out-of-the-box laptop with a wireless card will automatically configure your computer to use built-in wireless configurations. Some simple steps in addition to this will allow you to connect to the Guest network we have set up at Elizabethtown College. As a guest of the college, you are permitted to use a specific username and password for this purpose. Please contact the Elizabethtown College Help Desk (x3333 or helpdesk@etown.edu) to receive this username and password and follow the instructions below to connect.

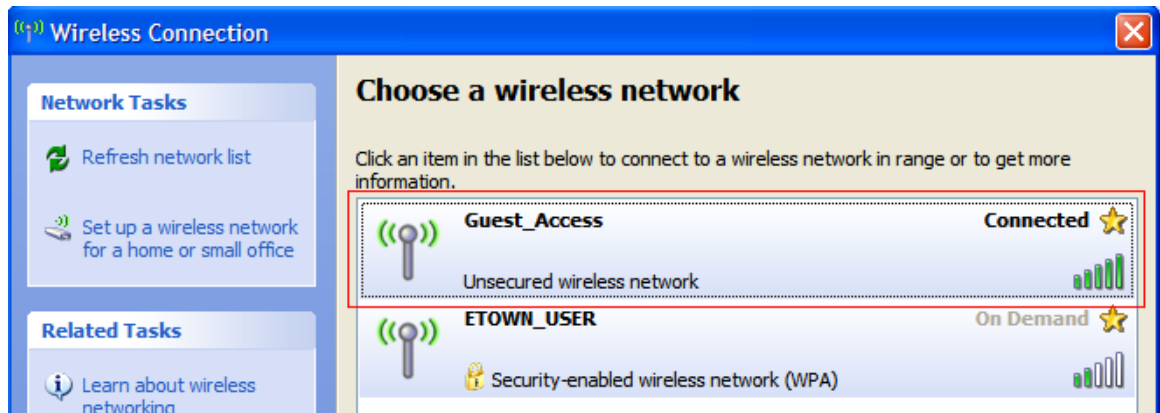
1. In your system tray (the lower right-hand corner of your screen) you should see an icon for wireless networks. **Double-click** this icon.



- 2.
3. Windows will detect any wireless networks in range, which will include the Guest_Access network and our secure Etown_User network. The latter is required for students and employees of the college only. As a guest of the college you will use Guest_Access.



- 4.
5. **Double-click Guest_Access** to connect (Windows may have already done this for you). The connection will look for a network address and showed **“Connected”** when finished.



- 6.
7. **Open** a web browser (ex. Internet Explorer). If you are asked to accept a security certificate, please choose **Yes**. After a moment it will display a page to enter your credentials. This is the username and password provided by the Help Desk.

- 8.
9. Enter the username (case sensitive) and password (all lowercase letters) and **click Login** to connect.