

Dance Studio

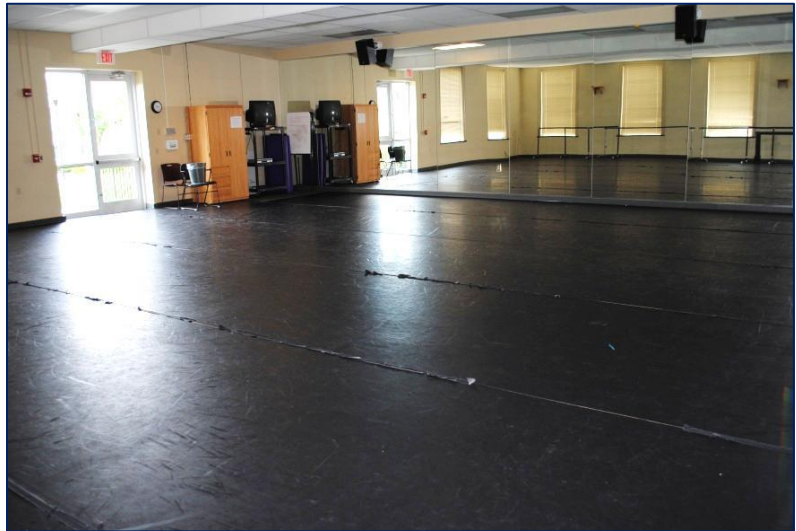
“BSC STD”

Space Features

- ✓ Capacity: 30 persons
- ✓ Layout: As-is, standing room only
- ✓ Ballet bars (7)
- ✓ Full wall mirrors (2)
- ✓ Sound equipment
- ✓ Cabinets for storage



*Proper footwear is required. NO SNEAKERS.



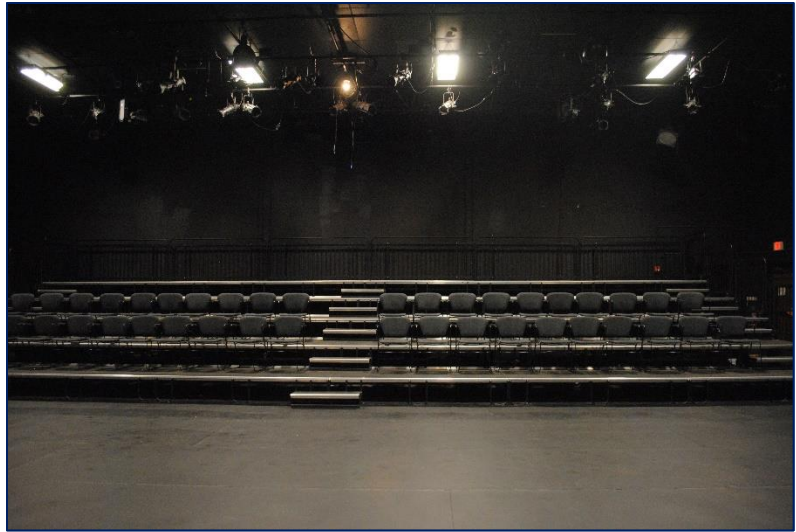
Note: Permission required from Michael Swanson

Tempest Theatre

“BSC TEMP”

Space Features

- ✓ Capacity: 100 persons
- ✓ Layout: As-is, theatre style
- ✓ Lighting control booth



Note: Permission required from Michael Swanson

Tower Conference Room

“BC 200”

Space Features

- ✓ Capacity: 16 persons
- ✓ Layout: Conference Style
- ✓ Catering available upon request
 - ✓ Additional fees
- ✓ Conference phone
- ✓ Media cart for must be requested via Media Services



Conference Room 211

“BC 211”

Space Features

- ✓ Capacity: 16 persons
- ✓ Layout: Conference style
 - ✓ Multiple tables pushed together with chairs
- ✓ White board
- ✓ Conference phone



Conference Room 258

“BC 258”

Space Features

- ✓ Capacity: 16 persons
- ✓ Layout: Conference style
 - ✓ 1 large table with chairs
- ✓ White board (1)
- ✓ Doors (2)



Back Patio

“BC BACK PATIO”

Space Features

- ✓ Capacity: 20 persons
- ✓ Layout: Patio furniture
- ✓ Outdoor venue
 - ✓ Rain location(s) may be required when booking outdoor venues
- ✓ Entrances from inside and outside
 - ✓ Ramp access



Center for Student Involvement Lounge

“BC LOUNGE”

Space Features

- ✓ Capacity: 45 persons
- ✓ Layout: Lounge style- soft furniture mixed with high top tables and chairs
- ✓ Catering available upon request
 - ✓ Additional fees
- ✓ Located across from the Marketplace

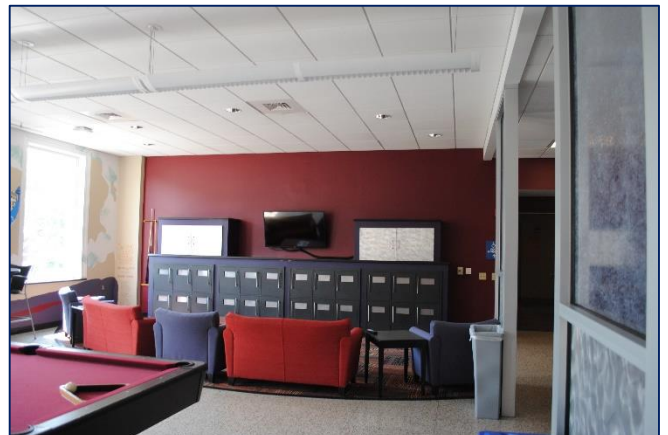
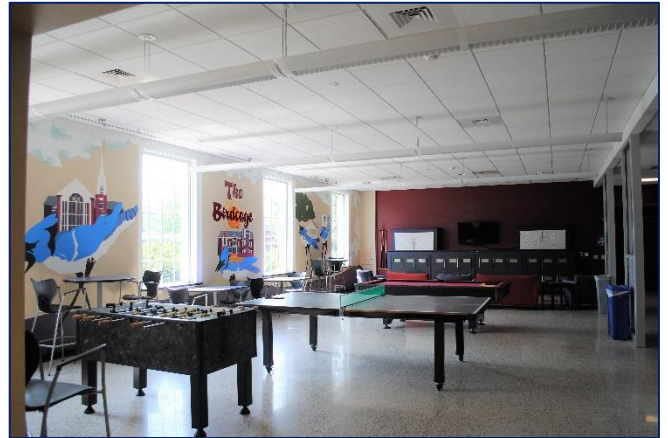


Bird Cage

“BC BIRD CAGE”

Space Features

- ✓ Capacity: 21 persons, plus standing room
- ✓ Layout: Game room lounge
- ✓ Television
- ✓ Soft furniture, tables and chairs
- ✓ Foosball table
- ✓ Ping pong table
- ✓ Pool table



Blue Bean Café

“BC BLUE BEAN”

Space Features

- ✓ Capacity: 63 persons
- ✓ Layout: As-is, lounge style
- ✓ Television
- ✓ Soft furniture, tables and chairs
- ✓ Starbucks™ Café
 - ✓ Hours vary during the school year. Closed during summer
- ✓ Catering available upon request
 - ✓ Additional fees
- ✓ Tables and chairs must be requested through Event Setups



Front Terrace/Patio

“BC FRONT TERRACE”

Space Features

- ✓ Capacity: ~100 persons
- ✓ Layout: Patio furniture
- ✓ Outdoor venue
 - ✓ Rain location(s) may be required when booking outdoor venues
- ✓ Catering available upon request
 - ✓ Additional fees
- ✓ Tables and chairs must be requested through Event Setups



KAV (Koons Activity Venue)

“BC KAV – EVENT SPACE”

Space Features

- ✓ Capacity: dependent on layout (anywhere from 20 – 400 persons)
- ✓ Catering available upon request
 - ✓ Additional fees
- ✓ Technicians available upon request
- ✓ Event venue lighting and sound
- ✓ Portable stage (with approval)
- ✓ Green room
- ✓ Blank canvas makes this a great space for any type of event!
 - ✓ Wedding receptions, catered dinners, concerts, performances, large meetings, etc.

Note: Permission required
Director of Technical Operations
and Event Setups



Concourse Table

“BC CONCOURSE TABLE”

Space Features

- ✓ Capacity: 2 persons
- ✓ Layout: 1 table with 2 chairs



Note: To reduce the number of events, these tables are limited to two time periods from 11:00 am – 1:00 pm and 4:00 pm – 7:00 pm

Jay's Nest Table

“BC JAY’S NEST TABLE”

Space Features

- ✓ Capacity: 2 persons
- ✓ Layout: 1 table with 2 chairs



Note: To reduce the number of events, these tables are limited to two time periods from 11:00 am – 1:00 pm and 4:00 pm – 7:00 pm

Marketplace Table

“BC MARKETPLACE TABLE”

Space Features

- ✓ Capacity: 2 persons
- ✓ Layout: 1 table with 2 chairs



Note: To reduce the number of events, these tables are limited to two time periods from 11:00 am – 1:00 pm and 4:00 pm – 7:00 pm