

Thompson 105

“TH 105”

Space Features

- ✓ Capacity: 42 persons
- ✓ Layout: classroom style with tablet arm chairs
- ✓ White Boards (2)
- ✓ Document Camera (1)
- ✓ Door (1)
- ✓ Network Connections available
- ✓ Smart Podium (1)
- ✓ Filing Cabinets (4)
- ✓ TV
- ✓ Meets all ADA Requirements



Note: Permission required from Athletics Department

Wenger Family Conference Room

“TH CONF ROOM”

Space Features

- ✓ Capacity: 15 persons
- ✓ Layout: conference style with a large table and chairs
- ✓ Office-style furniture outlines the room
- ✓ Has showcases to house trophies and awards
- ✓ No PowerPoint connections available
- ✓ Meets all ADA Requirements



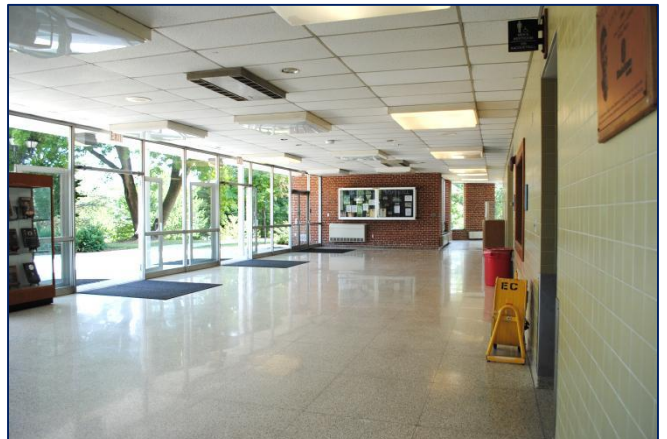
Note: Permission required from Athletics Department

Thompson Gym Lobby

“TH LOBBY”

Space Features

- ✓ Capacity: 100 persons
- ✓ Standing Room Only
- ✓ Catering available upon request
 - ✓ Additional fees
- ✓ Tables and chairs must be requested through Event Setups
- ✓ Doors (4 sets of doubles)
- ✓ Meets all ADA Requirements



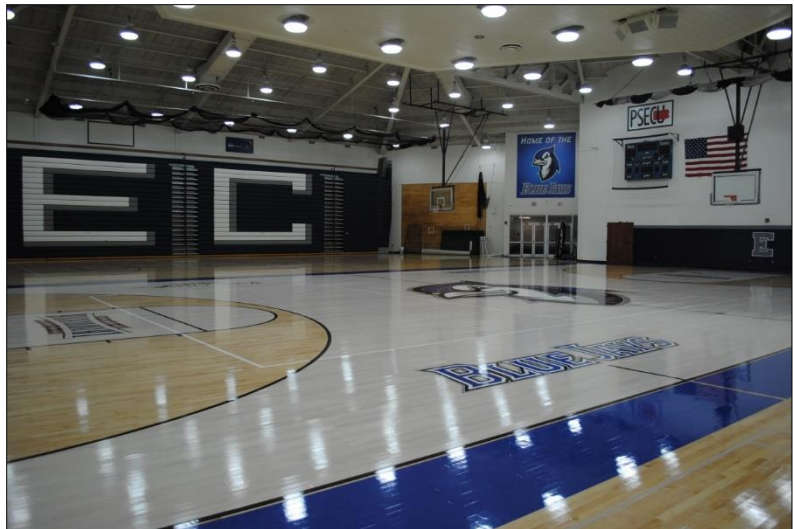
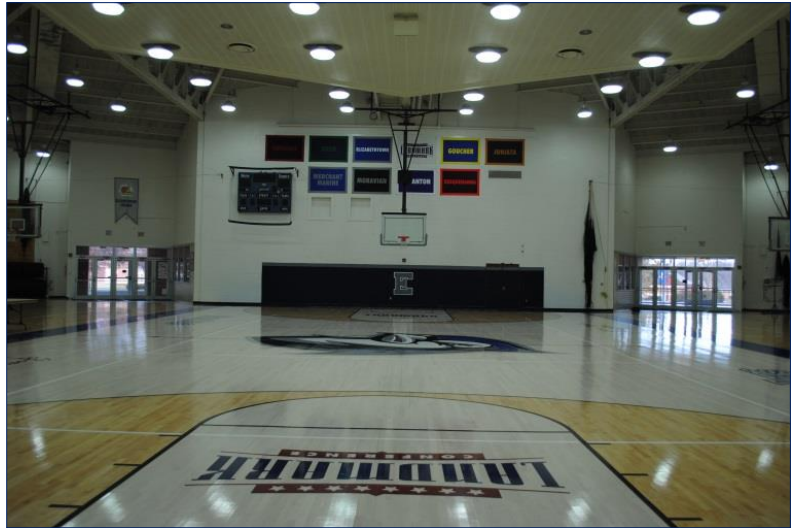
Note: Permission required from Athletics Department

Thompson Gym

“TH GYM”

Space Features

- ✓ Capacity: 3000 persons
- ✓ Layout: As-Is
 - ✓ Bleacher seating available on opposite sides of Gym
- ✓ Basketball hoops (6)
 - ✓ Retractable
- ✓ Catering available upon request
 - ✓ Additional fees
- ✓ Tables and chairs must be requested through Event Setups
 - ✓ Special matting MUST go down when placing tables and chairs on Gym floor (requires extra setup/teardown time)



Note: Permission required from Athletics Department

Thompson Jaywalk

“TH JAYWALK”

Space Features

- ✓ Capacity: 300 persons
- ✓ Layout: As-Is, lounge soft furniture
 - ✓ Capacity decreases significantly depending on added tables and chairs
- ✓ Catering available upon request
 - ✓ Additional fees
- ✓ Tables and chairs must be requested through Event Setups



Note: Permission required from Athletics Department

Thompson Patio

“TH PATIO”

Space Features

- ✓ Capacity: 300 persons
- ✓ Layout: Standing room only
 - ✓ Capacity decreases significantly depending on added tables and chairs
- ✓ Outdoor venue
 - ✓ Rain location(s) may be required when booking outdoor venues
- ✓ Catering available upon request
 - ✓ Additional fees
- ✓ Tables and chairs must be requested through Event Setups



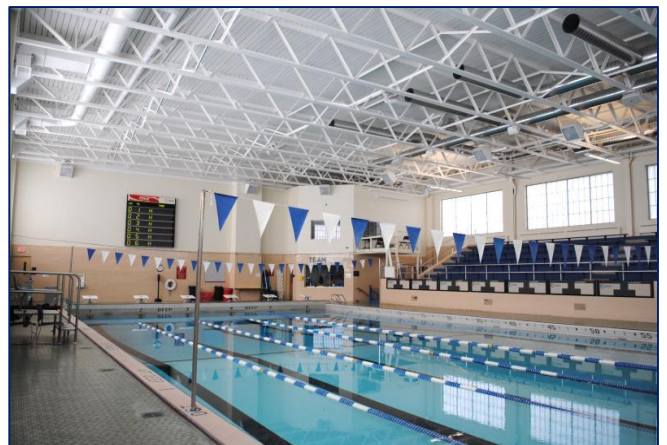
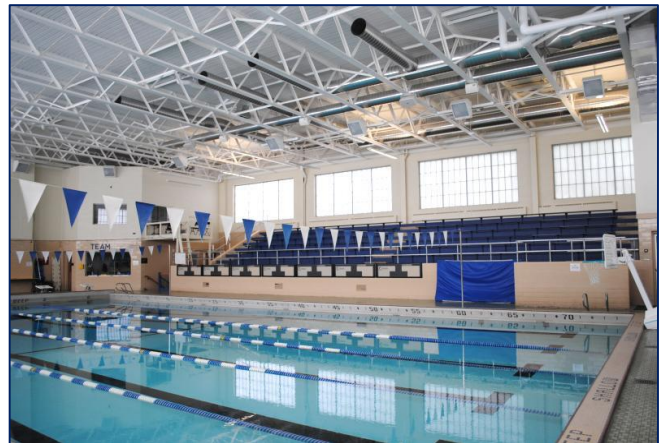
Note: Permission required from Athletics Department

Thompson Gym Pool

“TH POOL”

Space Features

- ✓ Capacity: 100 persons
- ✓ Layout: stadium-style bleachers
- ✓ Six (6) lanes
- ✓ Does not meet any ADA Requirements



Note: Permission required from Athletics Department

Racquetball Courts

“TH RQBL”

Space Features

- ✓ Capacity: 4 persons
- ✓ Total Rooms (3)
- ✓ Standing Room Only
- ✓ ADA Requirements
 - ✓ Doorways are only 27.5” wide
 - ✓ Doors are only 29.75” wide
 - ✓ Lighting Automatic



Note: Permission required from Athletics Department

Wrestling Room

“TH WRST”

Space Features

- ✓ Standing Room Only
- ✓ Majority of floor covered in thick padding for wrestling
- ✓ Contains various workout equipment
- ✓ Sound system
- ✓ DVD Player
- ✓ ADA Requirements:
 - ✓ Light Switch is 51.5”
 - ✓ No Seating available
 - ✓ Door is correct



Note: Permission required from Athletics Department