

Honors 201 – Public Heritage Studies 201: Elizabethtown History: Campus and Community

Market Street Marietta, Pennsylvania: 300 Years of Economics Along the Susquehanna River

Jackson P. Lager  
19 April 2022  
Professor Jean-Paul Benowitz  
Elizabethtown College

## **Reinhart-Libhart House**

**124 West Front Street Marietta, Pennsylvania**



### **Abstract:**

Constructed prior to 1848, by Isaac Reinhart, in the Federal style, this was the home of John Jay Libhart. President of the School Directors, Libhart taught art and drawing at the Wickersham Academy. Libhart developed into a respected regional landscape artist, painting portraits and miniatures for patrons in Harrisburg, Lebanon and Lancaster. Starting as an ornamental sign painter and gilder, while mostly self-taught, he studied under Arthur Armstrong, who opened a studio in Marietta in the 1820s. Libhart was the first president of the Pioneer Fire brigade, he worked as a druggist, inventor, postmaster, and served as an Associate Judge for the Courts of Lancaster County. Libhart was a naturalist and illustrated the scholarship produced by neighbor naturalist and philologist Samuel Stehman Haldeman, together they established the Marietta Lyceum.

## Prologue:

This is one report in a collection of seventeen reports about historically significant properties in Marietta, Pennsylvania a National Historic District. These reports form a collective study entitled, “Market Street Marietta, Pennsylvania: 300 Years of Economics Along the Susquehanna River.”

The major corridor for transportation in every British community is historically called High Street. When William Penn laid out the city of Philadelphia he planned for a High Street in the English tradition. William Penn introduced a new concept to British towns, the establishment of a public market in the town center square.

Philadelphia set the standard for every town planned in Colonial America, a public market situated at the crossroads of High Street and the cross street leading to the nearest river, thus creating a Center Square. In time all High Streets in the United States were re-named Market Street.

As in the case with Philadelphia, every Market Street in America became the most important thoroughfare where business, finance, economics, political power, and culture were established and evolved.

The Center Market Square in Marietta is situated at the intersection of Market and Gay Streets. Market Street runs east and west, parallel to the Susquehanna River, while Gay Street runs north and south leading from the Market Square to the Susquehanna River.

Marietta was created through the incorporation of several neighboring villages: Irishtown, New Haven, Waterford, Moravian Town (Bungletown), and technically Chickies where the iron industry was concentrated. Market Street had many names as it crossed through these hamlets, including United States Street in Irishtown, which was re-named Market Street when it was incorporated into Marietta in 1967.

Market Street in Marietta takes a circuitous route as it is a continuous winding thread linking the “main street” in each village which joined together to make Marietta.

These reports seek to re-create life in Marietta on Market Street along the Susquehanna River. The homes, counting houses, warehouses, taverns, restaurants, hotels, public houses, serving the coal and lumber yards, the iron furnaces and

transportation systems of the river, canal, and the rail road.

In 2014, Arcadia Publishing (Charleston, South Carolina) published a book entitled, Elizabethtown College as part of their *Campus History Series: Images of America*, authored by Jean-Paul Benowitz, who teaches History at Elizabethtown College. In 2015, Arcadia Publishing asked Jean-Paul to write a history of Elizabethtown Borough, published under the title, Elizabethtown: Images of America. In the fall semester of 2016 Elizabethtown College began offering an Honors First Year Seminar, taught by Jean-Paul, called “Landmarks and Legends: Learning Local History.” In the spring semester of 217 Elizabethtown College began offering an Honors research methods course, taught by Jean-Paul called, “Elizabethtown History: Campus and Community.” These courses helped Elizabethtown College secure a Mellon Grant, in 2018, called “Confronting Challenges with Confidence: Humanities for Our World Today.”

Jean-Paul’s courses were supported by this grant as part of the “Development and Delivery of Global and Regional Heritage Studies Courses/Experiences.” The Mellon Grant and these local history courses led to the creation in 2019 of a Certificate in Public Heritage Studies for History majors at Elizabethtown College.

These courses are based, in part, on The National Collegiate Honors Council program called “Partners in the Parks.” This is an outdoor experiential learning program offered through a collaboration between NCHC and the National Park Service. NCHC also offers programming called “Place As Text” where students immerse themselves in the local community exploring the culture and geography of the local neighborhood. Students are challenged to be sensitive and reflect about the human experience in the local built environment.

In the spring of 2016 the course, “Elizabethtown History: Campus and Community,” involved a partnership with the Lancaster Preservation Trust and Elizabethtown Borough. Students conducted archival and field research in an effort to prevent the historically significant Moose Lodge building in Elizabethtown from being razed. This successful historic preservation project attracted the attention of the Architectural Historian for

Pennsylvania Department of Transportation Engineering District 8.

In the spring of 2017 the course, “Elizabethtown History: Campus and Community,” involved a partnership with PennDOT. Students engaged in archival and field research to conduct National Historic Preservation Act Section 106 Reviews of local historic properties. Student research findings were published through the digital humanities project: ArcGIS story maps. Students’ reports were used by PennDOT, Elizabethtown Borough, and the federal Department of Transportation regarding historic preservation initiatives and public works projects concerning rebuilding the Market Street Bridge.

In the spring semester 2019, the course, “Elizabethtown History: Campus and Community,” involved a partnership with RiverStewards, Inc. The students conducted NHPA Section 106 Reviews of historically significant properties in the Marietta Historic District(s) and the Chickies Historic District. The students published their findings online through an ArcGIS map. The students presented their findings at Scholarship and Creative Arts Day (SCAD) at Elizabethtown College on Tuesday 16 April 2019 and at Marietta Day on Saturday 11 May 2019 in Marietta. One of the students in the class, Kyle C. Cappucci, expanded the project for a Summer Scholarship, Creative Arts, and Research Project (SCARP) in the summer of 2019. Cappucci broadened the Community Based Learning project to include Marietta Restoration Associates, Inc.; RiverStewards, Inc.; Rivertownes PA USA, Inc.; and Susquehanna Heritage, Inc. Cappucci expanded the scope of the map beyond historical significance to illustrate the contemporary relevance of Marietta.

Cappucci presented his scholarship to the Marietta Borough Council meeting on Tuesday 9 July 2019 and to the general public at the former First National Bank on Wednesday 17 July 2019. His presentations entitled: “Putting Historic Marietta on The Map: This Place Matters!” illustrated how the scholarship by the Honors students at Elizabethtown College can bring positive attention to the Marietta Historic District, the Chickies Historic District, and the Northwest Lancaster County River Trail. To this end, Cappucci suggested the Marietta Restoration Associates, Inc. take the lead in launching a historic preservation awareness campaign created by the

National Trust for Historic Preservation, called “This Place Matters!”

“This Place Matters!” a national campaign, created by the National Historic Preservation Trust, encouraging people to celebrate places meaningful to them and to their communities. Since 2015, participants have shared more than 10,000 photographs of themselves and their favorite places on social media using the hashtag #ThisPlaceMatters.

In the summer of 2020, Kyle Cappucci worked, in the remote, on an Elizabethtown College Summer Scholarship, Creative Art and Research Program Project entitled: “This Place Matters! The National Trust for Historic Preservation and Economic Revitalization in Marietta, Pennsylvania.” Through this SCARP project Elizabethtown College partnering with various stakeholders in Marietta, will be launching a This Place Matters campaign for Marietta. This campaign is not just public awareness through photography and social media. It is about telling the stories of why these places hold historical significance. Through This Place Matters, the National Historic Preservation Trust, encourages and inspires an ongoing dialogue about the importance of place and preservation.

In the summer of 2021 Kyle Cappucci will commence work on a Elizabethtown College Summer Scholarship, Creative Art and Research Program Project entitled: “Ecological and Economic Revitalization Through Historic Preservation of the Northwest Lancaster County River Trail in the National Historic District of Marietta, Pennsylvania” which will serve as the basis for his Honors in the Discipline Senior Thesis. Cappucci is exploring the relationship between historic preservation and economic development in Historic Districts.

This is one report, in a series of seventeen reports being used to inform the Marietta This Place Matters campaign.

*Jean-Paul Benowitz*  
Thursday 11 January 202

### Property Details:

124 West Front Street is a residential property with a total of five thousand two hundred twenty-seven square feet of land.<sup>1</sup> The house is a two-story structure with a total living space of one thousand two hundred thirty square feet, built in 1850.<sup>2</sup> The house has a total of six rooms; three bedrooms, one full bathroom, three extra fixtures, and could hold one family.<sup>3</sup> The roof is a metal preformed roof, coving one thousand two hundred thirty square feet.<sup>4</sup> The house has a basement, totaling in at six hundred fifteen square feet.<sup>5</sup> The exterior of the house is frame, with vinyl siding.<sup>6</sup> There is a raised enclosed porch with solid walls with an area of one hundred eighty square feet.<sup>7</sup> The fuel type of the house is oil, which is part of the house's heating system.<sup>8</sup> There is also a forced air furnace in the house.<sup>9</sup> Detached from the house is a wood frame storage shed, built in 1980, with a total living area of forty-eight square feet. The gas, water, and sewage supplies are all public system, and the house's electricity is hooked up.<sup>10</sup>

### Deed Search:

The current owner of the property is FHP States, LLC, who purchased it from Marietta Development Group, LLC for \$77,000 (22 May 2014) , who purchased it from James R. Squibbs, Jr., Barbara A. Squibbs, and Larry G. Sollenberger for \$60,000 (19 May 2008) , who received it from Edna M. Beaston via James L. Albert, executrix for \$28,000 (30 August 1993) , who was granted it via right of survivorship from her husband Linden Beaston for \$1 (1 October 1979) , who was given full ownership from Rhoda Beaston for \$750 (10 March 1956) , who shared it with Linden after purchasing it from Samuel S. Gible for \$585 (17 February 1945) , who purchased it from Charles Stein/Stine and Nora Stine for \$400 (5 May 1943) , who purchased it from Anna R. Libhart Denny, John Dewitt Denny, Ella M. Fendrich, William H. Fendrich, E. Halda Libhart, and S. H. Libhart for \$500 (24 January 1927) . S. H. Libhart bought it from John J. Libhart's heirs for \$500 (3 April 1891) , and John J. Libhart was granted it by Isaac Reinhart for no charge (19 January 1848) .

### Architectural Style:

124 West Front St was built some time before 1848, meaning it was built during the pre-Civil War era known as the Early Republic. Being from such a time, there were two major architectural styles which are most notable for spreading at the time, federal style and early classical revival style. Though the house's exterior has been modified to appear more modern, its federal style architecture can still be seen.

A quick look at the exterior of the house shows it is an attached house, two bays wide and three bays deep. The house is in the federal style, indicated by the small windows, wooden structure (currently covered by aluminum siding), and horizontal siding.<sup>11</sup> There is no chimney present, but the chimney on the building beside it, as well as evidence from historical photos<sup>12</sup>, shows the chimneys are in the British style, where a large amount of heat is lost to the outside because of its positioning against the outside wall.<sup>13</sup> The windows are in the sash style – as they are made of panels with the ability to slide over one another to open – and are six over six panel windows, a staple of the federal style.<sup>14</sup> The door is a zero panel door with an ovicular style window, meaning it

---

<sup>1</sup> "Lancaster County Property Tax Inquiry," Lancaster PA. Devnet Wedge, accessed Jan. 2022 <http://lancasterpa.devnetwedge.com/parcel/view/4208353700000/2022>.

<sup>2</sup> Ibid.

<sup>3</sup> Ibid.

<sup>4</sup> Ibid.

<sup>5</sup> Ibid.

<sup>6</sup> Ibid.

<sup>7</sup> Ibid.

<sup>8</sup> Ibid.

<sup>9</sup> Ibid.

<sup>10</sup> Ibid.

<sup>11</sup> Will Jones, *How to Read Houses* (New York: Rizzoli International Publications, 2014), 19.

<sup>12</sup> See footnote 117.

<sup>13</sup> <http://www.phmc.state.pa.us/portal/communities/architecture/styles/federal.html>.

<sup>14</sup> Ibid.

is not the house's original door.<sup>15</sup> The hipped roof and symmetrical build of the house is indicative of the federal style.<sup>16</sup> There is a pent roof on the front of the building.

### Federal Style (Adam Style) Architecture<sup>17</sup>

The Federal style is a refinement of the Georgian style of architecture developed in England by the Adam brothers.<sup>18</sup> Both styles share many similarities in their designs, yet they differ on their details and ornamentation. The Federal style is much more finely drawn.<sup>19</sup> This style was a popular one throughout the American colonies after the Revolutionary War, and it maintained its prominence as the dominant style in the States until 1820, when the Classical Revival style became more sought after.<sup>20</sup> Most identifiable features of the Federal style are as follows: symmetrical form, fan light over a paneled front door, hipped roof, double hung windows (six panes over six most common), Tripart or Palladian windows, etc.<sup>21</sup>

### **History of Marietta, Pennsylvania:**

#### *Founding Families of Marietta<sup>22</sup>*

Marietta was established in the eighteenth century which is in contrast to some histories of the community placing the origins between 1800-1812. Marietta was settled by Scotch-Irish Presbyterians and Swiss German Mennonites which is in contrast to some histories claiming the community was settled exclusively by Scotch-Irish Presbyterians. The Scotch-Irish Presbyterians founders focused on transportation along the Susquehanna River and Pennsylvania Canal, while the Mennonites founders initiated lumber production and related industries. Both entrepreneurial founding groups relied on transient workers.

Initially British fur traders, competing with French fur traders, established economic relations with indigenous populations along the Susquehanna River. Welsh fur trader Robert Wilkins was likely born around 1672 in Brecon, Wales,<sup>23</sup> arrived in the Marietta area sometime before 1702, at which time he married Elizabeth Ross in Lancaster County.<sup>24</sup> Wilkins first settled along the Conestoga Creek, next to Richard Carter who settled Warwick Township. In 1718, Wilkins took up 200 acres of land along the Susquehanna River, and in 1727 he sold it to The Reverend James Anderson, primary founder of Marietta.<sup>25</sup>

The Reverend James Anderson (1678-1740), educated at Edinburgh, Scotland under the care of Principal Stirling,<sup>26</sup> served The Donegal Presbyterian Church. Born in Scotland ordained by Irvine Presbytery, 17 November 1708 in Virginia. Anderson arrived in the Rappahannock, Virginia on 22 April 1709, before settling in New Castle, Delaware in 1717 later accepting a call to a congregation in New York City, which, at the time was worshipping in the City Hall. On 24 September 1726, he received a final call to the Donegal Presbyterian Church in Mount Joy. He was installed the last Wednesday in August 1727.<sup>27</sup>

<sup>15</sup> Ibid.

<sup>16</sup> Ibid.

<sup>17</sup> This section was authored by Jackson P. Lager, Elizabethtown College Class of 2024, Political Science major, and appears in his Section 106 Review of the Leader-Heistand House at 462 East Front Street, Marietta PA (6 May 2021). This can be found on the ArcGIS map at <https://etown.maps.arcgis.com/apps/MapTour/index.html?appid=4aa891be7b62420fb477955d16a6bb3a>, under the number 29.

<sup>18</sup> <http://www.phmc.state.pa.us/portal/communities/architecture/styles/federal.html>.

<sup>19</sup> Ibid.

<sup>20</sup> Ibid.

<sup>21</sup> Ibid.

<sup>22</sup> This section of the property report was authored by Eric J. Schubert, Elizabethtown College Class of 2023, History and Political Science major, Founder and Genealogist of ES Genealogy, for a presentation by students in this class, entitled "Marietta, Pennsylvania's Historic Homes On Front Street: Transportation, Trade, Triumph, and Tragedy Along The Susquehanna River and the Pennsylvania Canal" at Elizabethtown College for Scholarship and Creative Arts Day Tuesday 20 April 2021.

<sup>23</sup> WeRelate, "Robert Wilkins" [https://www.werelate.org/wiki/Person:Robert\\_Wilkins\\_\(7\)](https://www.werelate.org/wiki/Person:Robert_Wilkins_(7)), accessed May 19, 2021.b

<sup>24</sup> Ibid.

<sup>25</sup> Ibid.

<sup>26</sup> Ibid.

<sup>27</sup> <http://www.donegalpc.org/pdfs/CEMETERY%20INDEX.pdf>

Wilkins' neighbor, George Stewart (1683-1759), from Donegal, Ireland,<sup>28</sup> was elected as one of the first Commissioners of Lancaster County at its formation in 1729 and elected to the Provincial Assembly in 1732 dying soon after his appointment.<sup>29</sup> After George Stewart passed, his son John Stewart (1705-1749) inherited the land and sold it to David Cook, sometimes spelled Cooke. John Stewart was married to Ann Anderson (1716-1816), the daughter of The Reverend James Anderson.<sup>30</sup>

David Cook (1721-1786), sometimes Cooke, was born in Lancaster County and is buried in The Donegal Presbyterian Church Cemetery, Mount Joy.<sup>31</sup> Eventually, David Cook sold this land (purchased from John Stewart), to Jacob Heistandt Neff,<sup>32</sup> the middle and last name represent two prominent Mennonite families and surnames in Lancaster County and specifically the Marietta area. Jacob Heistandt Neff (1727-1798) was from Manor Township.<sup>33</sup>

Marietta was founded by leaders and members of two prominent churches in Mount Joy. The Donegal Presbyterian Church (1732) and the Mount Joy Mennonite Church (1790). The Donegal Presbyterian Church was founded in 1727 with the church being built in 1732. The Reverend James Anderson (1678-1740), primary founder of Marietta, was the minister.<sup>34</sup> The Mount Joy Mennonite Church was founded in 1790, with members meeting for worship in their homes, as was the custom of the time and remains the practice of the Old Order Amish. In 1812 a log meetinghouse on land donated by Peter Delebaugh Kraybill (1784-1869).<sup>35</sup> The first minister of The Mount Joy Mennonite Church was The Reverend Jacob Hostetter Hershey (1747-1819).<sup>36</sup> Both The Reverend Jacob Hershey and Peter Kraybill are buried at the Kraybill Mennonite Cemetery in Mount Joy.<sup>37</sup>

This points to the significance of the Presbyterians and Mennonites settling in Lancaster County after arriving in Philadelphia and Delaware, eventually realizing the economic significance of developing the land along the Susquehanna River associated with westward expansion of the nation. The early settlers settled in Mount Joy and not within the dangerous flood plain of the Susquehanna River. It also demonstrates the socio-economic bias of the settlers, believing poor lives were dispensable, poor transient workers living and working along the Susquehanna River, if they lost their lives and/or livelihood from flooding or from rowdy living, there are many histories of the community documenting drunken brawling in taverns, pubs, and hotels, the lives of these transient workers were not important, while the wealthy, benefiting from commerce along the Susquehanna River and Pennsylvania Canal, lived on higher safer ground in Mount Joy.

### *The Pennsylvania Canal & Marietta, Pennsylvania*

The next time you are on the Northwest Lancaster County River Trail (2007) in Marietta, imagine the path of the Pennsylvania Canal (1824-1900) running parallel to the Susquehanna River. Take a moment to consider Nebuchadnezzar, the great ruler of Babylon in 500 B. C., remaking a canal which is believed to have first been dug more than a thousand years earlier. The Nebuchadnezzar Royal Canal connected the Tigris and Euphrates Rivers.<sup>38</sup> Imagine China's Grand Canal, a UNESCO World Heritage Site, 1,000 miles long connecting Hangzhou and Tientsin, built in 500 B. C. Reflecting on how there are more than 26,000 miles of canal in all parts of the world, suddenly Marietta feels much older and more connected to the world than it seems today.<sup>39</sup>

<sup>28</sup> Geni, "George Stewart" <https://www.geni.com/people/George-Stewart/6000000013217652542>, accessed May 19, 2021

<sup>29</sup> Ibid.

<sup>30</sup> Ibid.

<sup>31</sup> Ancestry.com Online Family Trees

<sup>32</sup> Ibid.

<sup>33</sup> Ibid.

<sup>34</sup> Wikipedia, "Donegal Presbyterian Church

Complex" [https://en.wikipedia.org/wiki/Donegal\\_Presbyterian\\_Church\\_Complex#:~:text=NRHP%20reference%20No.&text=Donegal%20Presbyterian%20Church%20Complex%20is,building%20with%20a%20gambrel%20roof](https://en.wikipedia.org/wiki/Donegal_Presbyterian_Church_Complex#:~:text=NRHP%20reference%20No.&text=Donegal%20Presbyterian%20Church%20Complex%20is,building%20with%20a%20gambrel%20roof), accessed May 20, 2021

<sup>35</sup> Ancestry.com Online Family Trees

<sup>36</sup> Ibid.

<sup>37</sup> Ibid.

<sup>38</sup> A. T. Olmstead, *History of the Persian Empire* (Chicago: University of Chicago Press, 1948), 50.

<sup>39</sup> Joseph Needham, *Science and Civilization in China* v. 4, p 3 (Taipei: Caves Books, 1986), 307.

When you walk around Marietta and you come across the Duffy-Rottmund House (1863) on Market Street, formerly Irishtown, think about Colonel James Duffy (1818-1888) as a boy, growing up along the Susquehanna River, working on the log rafts as a draftsman until earning the rank of pilot and making a successful career in river transportation.<sup>40</sup> In 1846 he traveled through Europe making a study of canals and returning to Marietta he fulfilled his goal of making the Pennsylvania Canal through Marietta a major corridor for transporting coal. By 1848 Colonel Duffy established a line of boats for transporting coal from Pottsville to New York, in the interests of the Schuylkill Navigation Company.<sup>41</sup>

When you think about Marietta and the Pennsylvania Canal remember it was based on a model established in 1639 when Mother Brook, the first canal was built connecting the Charles and Neponset Rivers in Dedham, Massachusetts.<sup>42</sup> From the beginning, Americans accepted waterways as the best method of traveling, or for moving goods from one place to another.<sup>43</sup> Construction on the Pennsylvania Canal started in 1824, it was a system of canals, dams, locks, tow paths, aqueducts, viaducts, tunnels, and bridges facilitating shipment of heavy bulk goods between Philadelphia (1682) and Pittsburgh (1758). The Pennsylvania Canal System developed in response to the growing markets in the Northwest Territory reached by the Ohio River through connecting the Susquehanna, Juniata, Conemaugh, Kiskiminetas, and Alleghany Rivers.<sup>44</sup> When finished in 1834 the trip from Philadelphia to Pittsburgh, via the Main Line of Public Works (1826), could be made in three to five days. By 1830, more than 4,000 miles of canals in New York, Pennsylvania, Maryland, Virginia, Ohio, and Indiana were started or planned between 1825 and 1845.<sup>45</sup>

The wonder of it all was the fact there were no American engineers at the time, and neither was there any excavating machinery. With no more than the ingenuity of local surveyors and such simple tools as shovels and wheelbarrows, these artificial rivers were cut through the most difficult countryside.<sup>46</sup> The equally amazing thing is how the canals are still functioning. Today we find modern railroads using ancient canal beds for their own track beds. Sometimes we drive through a high-walled section of farmland which was first a canal way before it became a highway. We might have thought a ditch running parallel to a railroad was for drainage. Actually it was once a canal; the present railway tracks are built on what was once the tow path. Or we might come upon some lofty bridge piers across a river where there is no roadway: we would hardly suspect they once held a wooden aqueduct and canal way, carrying it and the canal traffic high across the roaring river below.<sup>47</sup>

The Pennsylvania Canal was not the only waterway serving the local economy of Marietta. In 1797 the Conewago Canal began carrying riverboats around the Conewago Falls on the Susquehanna River near York Haven.<sup>48</sup> The Susquehanna and Tidewater Canal, built between 1836-1840, connected Wrightsville (1811) with Havre de Grace, Maryland (1785). The Susquehanna and Tidewater Canal facilitated transportation of lumber, coal, and raw materials from Marietta (1719) and Columbia (1724) to the Port of Baltimore (1729).<sup>49</sup> This is the reason why the economy in Marietta was built on lumber, coal, whiskey, and transportation.<sup>50</sup>

The origins of the Pennsylvania Canal date back to 1690 when William Penn proposed building a canal connecting Philadelphia with the Susquehanna River. It took 102 years until in 1792, as an initiative of the

<sup>40</sup> H. M. J. Klein, Lancaster County Pennsylvania: A History v. iv (New York: Lewis Historical Publishing Company, Inc., 1924), 406.

<sup>41</sup> Biographical Annals of Lancaster County Pennsylvania (Lancaster, PA: J. H. Beers & Company, 1903), 299.

<sup>42</sup> Electa Kane Tritsch, Building Dedham (Dedham, MA: Dedham Historical Society, 1986), 14.

<sup>43</sup> Eric Sloane, Our Vanishing Landscape (New York: Funk & Wagnalls, 1955), 50.

<sup>44</sup> William H. Shank, Indian Trails to Super Highways (York, PA: American Canal & Transportation Center, 1988), 42; Robert McCullough, The Pennsylvania Main Line Canal (York, PA: American Canal and Transportation Center, 1973).

<sup>45</sup> *Ibid.*, 43.

<sup>46</sup> Sloane, 52.

<sup>47</sup> *Ibid.*, 53.

<sup>48</sup> Robert J. Kapsch Canals (New York: W. W. Norton and Company, 2004), 13-14; William Young, Account of the Conewago Canal On the River Susquehanna (Philadelphia: Whitehall Press, 1798).

<sup>49</sup> James Weston Livingood, The Philadelphia –Baltimore Trade Rivalry, 1780-1860 (Philadelphia: Ayer Publishing, 1970), 43-45; Theodorick Bland, Report by The Maryland Commissioners On A Proposed Canal from Baltimore to Conewago (Baltimore: F. Lucas, 1823).

<sup>50</sup> Marietta Sesquicentennial: 1812-1962 Souvenir Booklet (Marietta, PA: n.p.), 15.

Washington administration (1789-1797), the Union Canal, was completed in 1828. Running eighty-two miles, the Union Canal connected Middletown (1755) on the Susquehanna River to Reading (1748) on the Schuylkill River.<sup>51</sup> By 1834 the Main Line of Public Works, composed of interlocking canals, was transporting passengers and freight across 1,243 miles. Incrementally the canals system was integrated into and eventually replaced by the rail roads. In 1859, one hundred and sixty-nine years after William Penn's canal proposal, all canals owned by the Commonwealth of Pennsylvania were sold. The Pennsylvania Rail Road (1846) formed the Pennsylvania Canal Company and continued to use canals for freight transportation. The canal business, however, declined steadily in the last quarter of the nineteenth century, and most Pennsylvania canals no longer functioned after 1900.<sup>52</sup>

The last canal boat to enter Marietta was in August of 1900. Captain Morris Nagle piloted a canal boat carrying coal from Nanticoke (1800) in Luzerne County. Captain Nagle docked the boat at Gay Street. The boat was dismantled and buried beneath the railroad bed when the Pennsylvania Rail Road was installed over the canal tow path.<sup>53</sup> In Marietta, along the Pennsylvania Canal boats were drawn by mules guided along the tow path parallel to Front Street.<sup>54</sup> A double canal boat could handle up to 250 tons of freight with a single mule team on the tow path.<sup>55</sup> In the winter the canal was drained to minimize damage from ice blocks and in the spring flooding (good for river transportation) washed out sections of the canal.<sup>56</sup> The last log raft to float down the Susquehanna River to Marietta landed on 12 April 1911.<sup>57</sup> Thus in the transition from the nineteenth to the twentieth centuries, transportation along the Susquehanna River and the Pennsylvania Canal were entirely replaced by the rail road network, changing the physical landscape of Marietta and the culture as well.

### *History of Marietta, Pennsylvania*<sup>58</sup>

As early as 8,000 BC Paleo-Indian settlements, the Susquehannocks flourished along the Susquehanna River with agricultural production and operating complex trade routes expanding throughout the continent. Every river valley and every tributary of the Swatara, Conoy, Chickies, Conestoga, Pequea, and Octorara Creeks has considerable evidence of human habitation in Lancaster County, Pennsylvania prior to European contact.<sup>59</sup>

In 1616 Etienne Brule (1592-1633) a French expert in the Algonquin language, who lived among the Susquehanna tribe in western New York, traveled down the Susquehanna River into the Chesapeake Bay. Along the way, Brule explored the tributaries of the Susquehanna River in Lancaster County and encountered the Susquehannock tribes living along the Susquehanna River.<sup>60</sup>

In 1629 Etienne Brule partnered with the British fur trader Sir David Kirke (1597-1654) establishing trade relations between the Europeans and Susquehannock tribes. By 1680-1690 no Susquehannock villages existed in Lancaster or York Counties. There was a migration to New York to settle among the Iroquois and Seneca and a movement south to Maryland.<sup>61</sup>

In 1681 British King Charles, II (1630-1685) granted a land charter to Quaker leader William Penn (1644-1718) to repay a debt the King owed to Admiral William Penn (1621-1670). King Charles named it Pennsylvania,

<sup>51</sup> Dean M. Aungst, *The Two Canals of Lebanon County* (Lebanon, PA: Lebanon County Historical Society, 1968), 9; John C. Clark, *The Union Canal Company of Pennsylvania* (Philadelphia: John C. Clark Printer, 1853).

<sup>52</sup> William H. Shank, *The Amazing Pennsylvania Canals* (York, PA: American Canal & Transportation Center, 1986), 49-51; Matthew Carey, *Pennsylvania Canals* (Philadelphia: n.p., 1828).

<sup>53</sup> *Marietta Sesquicentennial: 1812-1962 Souvenir Booklet* (Marietta, PA: n.p.), 14.

<sup>54</sup> Frederic H. Abendschein, *Colombia, Marietta, and Wrightsville: Images of America* (Charleston, S. C.: 2009), 100.

<sup>55</sup> Shank, 44.

<sup>56</sup> Abendschein, 100.

<sup>57</sup> Ibid. 16.

<sup>58</sup> This section of the property report was authored by Kyle C. Cappucci, Elizabethtown College Class of 2022 as a research paper entitled, "Marietta Pennsylvania Historic District & The Susquehanna National Heritage Area Designation ArcGIS Story Map" presented at the Landmark Conference Thursday 11 July 2019 as part of the college's Summer Scholarship, Creative Arts, and Research Projects (SCARP) program. It has been inserted here to give the reader context for the remainder of the report.

<sup>59</sup> Benowitz, Jean-Paul, Elizabethtown Advocate. "American Indians Were Major Part of Development of E-town" etownpa.com <http://etownpa.com/american-indians-major-part-development-e-town/> (accessed May 21, 2019).

<sup>60</sup> Ibid.

<sup>61</sup> Ibid.



meaning Penn's Woods: Penn and Sylvania from the Latin *silva* which translates forest or woods. There were no Susquehannocks living in this region by the time William Penn acquired the land from King Charles, II (1630-1685).<sup>62</sup>

In 1701 William Penn (1644-1718) gave a patent of 3,000 acres of land along the Susquehanna River to George Beale (British). By 1703 Consumed by debt, William Penn (1644-1718) charged his land agent James Logan (1674-1751) to send him in London "bear and buck skins for they [the creditors] bear an advance" and "urge the Pennsylvania assembly to establish a propriety monopoly in the Indian trade."<sup>63</sup>

In 1708 James Logan invited the French Expert Indian language interpreter Peter Bezaillion (1661-1742) to establish a fur trading post where the Conoy Creek meets the Susquehanna River in Bainbridge, Pennsylvania north 7.5 miles north of Marietta. By 1719 Bezaillion invited the Piscataway tribe to move from Maryland to Conoy Town. They assumed the name Canoise or corn shellers and were called the Conoy Indians.<sup>64</sup>

In 1717 Peter Logan did not only invite French and Indian fur traders to settle between the Conoy and Conewago Creeks along the Susquehanna River, he also sold land to the highest bidders among the Swiss-German (mostly Mennonite) Palatine farmers arriving in Pennsylvania in 1717. Simultaneously there was an influx of Ulster Scots or Scots-Irish settlers. William Penn's sons John (1700-1746), Richard (1706-1771), and Thomas (1702-1775) inherited a great deal of debt when their father died in 1718. The Penn brothers became alienated from Quaker beliefs and did not subscribe to their father's ideals for Pennsylvania.<sup>65</sup>

In 1717 one year before his death, William Penn reserved 16,000 acres in Lancaster County for various tribes as a reserved hunting ground. This promise by William Penn would not be kept by his sons. According to Mennonite historian the Reverend John L. Ruth, Mennonite settlers in Lancaster County anxiously paid up to four times more than the price the Penn brothers were asking for acres. Meanwhile the Scots-Irish settlers encouraged to move here by James Logan started living on the land without title. The obvious defense of one's claim to property was to construct buildings and begin to improve the land, even before it was legally acquired.<sup>66</sup>

In 1719 Robert Wilkins, Scotch-Irish (Ulster Scots; Anglo-Irish Presbyterians), Indian Trader, acquired 300 acres along the Susquehanna River north of Chickies Creek. In 1719 George Stewart, Scotch-Irish, was sold a tract of land east of the Robert Wilkins tract. In 1727 Robert Wilkins sold the tract of Penn land to Scotch-Irish, The Reverend James Anderson, clergy at the Donegal Presbyterian Church (1732) in Mount Joy, in East Donegal Township. Son James Anderson operated the ferry and built the Accomac Inn.<sup>67</sup>

In 1733 George Stewart's son and daughter-in-law, John and Ann Stewart, inherited and sold the James Anderson tract to David Cook. This tract of land was given to his son David Cook whose son, David Cook, laid out the town of New Haven. Additional acres of the Stewart tract were given to David Cook's son James.<sup>68</sup>

Peter Bezaillion built Old Peter's Road, as it is still known in parts of Lancaster County, to facilitate French and Indian fur trading linking Philadelphia to Bainbridge (1719). Bezaillion who, in partnership with the British, challenged France's control over the territory between the Appalachian Mountains and the Mississippi River, a struggle which helped precipitate the French and Indian War. The French found the Algonquin tribes their allies, while the Iroquois sided with the British. Raids of British colonists occurred on both sides.<sup>69</sup>

By 1743, The Piscataway tribes had moved away from Bainbridge, migrating north along the Susquehanna River settling in Shamokin. British victories in Quebec (1759) and Montreal (1760) led to France surrendering all of New France to the British. The British took over all French forts on the frontier and became the new authoritarian power for the tribes in these regions during The French and Indian War (1755-1763).<sup>70</sup>

---

<sup>62</sup> Ibid.

<sup>63</sup> Ibid.

<sup>64</sup> Ibid.

<sup>65</sup> Ibid.

<sup>66</sup> Ibid.

<sup>67</sup> Marietta Sesquicentennial Souvenir Booklet (Marietta, PA: August 4, 1962).

<sup>68</sup> Ibid.

<sup>69</sup> Ibid.

<sup>70</sup> Ibid.

Between 1775-1783 Marietta played an important role in the American Revolution manufacturing iron and lumber, producing agricultural goods, distilling whiskey, and ferry transportation between Lancaster and York Counties over the Susquehanna River. The capitol of Continental Congress was in Lancaster City on 22 September 1777. Lancaster City was the capitol of Pennsylvania from 1799-1812. York City was the capitol of the Continental Congress from 1777-1778. The Articles of Confederation were drafted and adopted in York thus the establishing the first constituting and government for the United States of America. In 1789 Quaker leader Samuel Wright renamed Wright's Ferry as Columbia and petitioned the new U. S. Congress to make this the location of the U. S. Capitol.<sup>71</sup>

In 1804, the third generation of Anderson, grandson James Anderson, laid out the town of Waterford. By 1812, James Anderson and James Cook procured a charter from the Pennsylvania legislature and named their incorporated towns Marietta. The next year, 1813, Anderson's town Waterford and Cook's town New Haven were consolidated including a tract of land owned by John Myers east of Moravian Town and a tract of land owned by Benjamin Long north of Waterford.<sup>72</sup>

In the same year, 1813 John Pedan, James Mehaffey, and Colonel James Duffy purchased 161 acres west of the Anderson tract and laid out Irishtown. The founders named each north-south street after U. S. naval heroes: Biddle, Jones, Decatur, Bainbridge, Morris, Hull, and Porter. The east-west streets named for American sea vessels: Essex, United States, Wasp, and Constitution. United States Street would become Market Street when all the towns were incorporated into the borough of Marietta.<sup>73</sup>

The next year, 1814, the Cassels sell the Neff tract to Jacob Grosh who laid out Moravian Town, known locally as Bungletown. By this time the major industry in Marietta was lumber. By 1814 there were nine lumber merchants in Marietta. Planing mills, lumberyards, carpentry shops, and allied businesses were the backbone of the local economy. Marietta was a waypoint for shipping lumber, bundled into rafts, downriver. In 1807 Henry Cassel established a lumber business on the corner of Third and Bank Streets. In 1848 Henry Cassel was joined by his son A. N. Cassel who in 1872 built a planing mill associated with the business. In 1850 B. F. Hiestand & Sons Planing Mill was established on the Susquehanna River below Chickes Rock with the lumber offices located on the corner of Bank and Second Streets. In 1945 the Hiestand lumber properties were deeded to the Paul W. Zimmerman Foundries Company manufacturing brass, bronze, and aluminum castings. In 1954 Zimmerman Foundries Company, was acquired by the Donegal Manufacturing Corporation, later called Donegal Steel Foundry Company which manufactured carbon, low alloy and stainless steel castings primarily for tanks for the U. S. Army during the Korean War (1950-1953).<sup>74</sup>

During 1812-1814, The Columbia-Wrightsville covered bridge constructed over the Susquehanna River, at the time considered the longest covered bridge in the world. Greatly enhances the economy for Marietta. Between 1812-1815 the War of 1812 between the U. S. and Great Britain began over alleged British violations of American shipping rights, such as impressment, the forcing of American merchant sailors to serve on British ships. American forces unsuccessfully invaded Canada and the British retaliated by burning down Washington, D. C. Within weeks U. S. Forces repulsed sea and land invasions of the British at the Port of Baltimore, particularly Fort McHenry. The war ended with victory for the United States at the Battle of New Orleans. Two companies from Marietta marched to Maryland in defense of Baltimore. One of the companies was called the Marietta Grays commanded by Jacob Grosh.<sup>75</sup>

In 1817 James Anderson built a road over Chickies Mountain, the Old Columbia Pike, linking Columbia, Pennsylvania, formerly Wright's Ferry, (1726) 3.6 miles south of Marietta. Anderson was preparing for the state legislature to build a bridge across the Susquehanna River connecting Marietta to York, Pennsylvania (1741).

<sup>71</sup> Lloyd, Junie, YorkBlog, "How did they get across the wide Susquehanna when there were no bridges?"

<https://yorkblog.com/universal/how-did-they-get-across-the-wide-susquehanna-when-there-were-no-bridges/> (accessed May 23, 2019).

<sup>72</sup> Marietta Sesquicentennial Souvenir Booklet (Marietta, PA: August 4, 1962).

<sup>73</sup> Ibid.

<sup>74</sup> Ibid.

<sup>75</sup> Ibid.

James Anderson operated a ferry across the Susquehanna River. Two miles north Mennonite Christian Winiker operated a ferry known as Vinegar Ferry.<sup>76</sup>

The Economic Panic of 1819 was the first major peacetime financial crisis in the U. S. following the collapse of the economy in the transition from a colonial commercial status with Europe toward an independent economy. The downturn was driven by global market adjustments in the aftermath of the Napoleonic Wars, its severity was compounded by excessive speculation in public lands. The Pennsylvania legislature did not build a bridge between Marietta and York. James Anderson lost most of his money building the Columbia Pike.<sup>77</sup>

Between 1826-1840 construction of the Pennsylvania Canal system to connect Philadelphia (1682) to Pittsburgh (1669) commenced. The Pennsylvania Rail Road (1846) eventually purchased the Pennsylvania Canal from the Commonwealth of Pennsylvania.<sup>78</sup>

In 1855 Eagle Furnace, anthracite iron furnace, opened. The iron industry in Marietta was dominated by Henry Musselman, Henry Miller Watts of Carlisle, and his father-in-law Dr. Peter Shoenberger, of Pittsburgh. The local iron industry was managed by Watts' son Ethelbert Watts (1846–1919) a U. S. diplomat who played important roles in the Spanish American War, Russo Japanese War, & WW I. These iron plants produced pig iron, sold under the brand name Vesta, transported on the Pennsylvania Canal and later by the railroad. In 1917 the iron plants, known as the Susquehanna Iron Company, sold the furnaces to E. J. Lavino who produced ferromanganese, used for high grade steel, during WW I. The manganese ores came from all over the world & the ferromanganese product was shipped to Youngstown, Ohio, Coatesville, and Pittsburgh. The production of iron ceased in the 1920s and the furnace was dismantled between 1928 and 1934.<sup>79</sup>

Between 1861-1865, during the American Civil War Marietta played a role in the Battle of Gettysburg 1-3 July 1863. Women from Marietta organized to prepare linen bandages and baked two wagonloads of bread dispatched to Gettysburg, Pennsylvania (1806) 45 miles west of Marietta. Marietta was protected from an invasion of Confederate troops because on 28 June 1863 Union forces burned the Columbia-Wrightsville covered bridge to prevent an advance of Confederate troops approaching from Wrightsville, York County. The Pennsylvania Rail Road used the bridge piers to support a rail bridge crossing the river from 1868-1896 when it was destroyed by the Cedar Keys Hurricane. In 1810 David Muma built a stone house which David Cassel (1774-1855) turned into a hotel in 1823 called the Perry House Hotel named for War of 1812 Commodore Oliver Hazard Perry (1785-1819). Perry House was a stronghold for Confederate sympathizers of Marietta where Copperheads and Unionists engaged in hostile political debates.<sup>80</sup>

In the post-Civil War years, by 1876 The Marietta Holloware and Enameling Company was established, by Colonel James Duffy among others, producing hollow castings such as toilet bowls, lavatory basins, cast iron cookware, ink pots for stencils, glue pots, teakettles, and cookware including sauce pans, and skillets.<sup>81</sup>

In 1882 Dr. H. M. Alexander used the methods of British physician and scientist, Edward Jenner (1749-1823) to create a vaccine for smallpox which he manufactured and sold commercially nationwide and globally. The work began in a chicken house adjacent to his office at 299 West Market Street. He purchased the H. McMullen Farm in the Irishtown neighborhood of Marietta located at Wasp and Biddle Streets and established the first commercial biological laboratory in the United States known as Dr. H. M. Alexander and Company and also as the Lancaster County Vaccine Farm.<sup>82</sup>

By the time of the First World War, in 1916, the heirs of Dr. Alexander sold their shares of the company to the Gilliland Laboratories, Inc. During the Second World War, in 1943 Gilliland Laboratories was acquired by the American Home Products Corporation. The following year, in 1944, The American Home Products

<sup>76</sup> Ibid.

<sup>77</sup> Revolvly. "Panic of 1819" revolvly.com <https://www.revolvly.com/page/Panic-of-1819> (accessed May 21, 2019).

<sup>78</sup> Pennsylvania Historical & Museum Commission. "Pennsylvania Canals- 1846" [phmc.state.pa.us](http://phmc.state.pa.us) [www.phmc.state.pa.us/portal/communities/documents/1776-1865/pennsylvania-canals.html](http://www.phmc.state.pa.us/portal/communities/documents/1776-1865/pennsylvania-canals.html) (accessed May 21, 2019).

<sup>79</sup> Rivertownes. "The Furnaces of Rivertownes" [rivertownes.org http://www.rivertownes.org/Features/Furnaces/Marietta.htm](http://www.rivertownes.org/Features/Furnaces/Marietta.htm) (accessed May 21, 2019).

<sup>80</sup> Marietta Sesquicentennial Souvenir Booklet (Marietta, PA: August 4, 1962).

<sup>81</sup> Ibid.

<sup>82</sup> Ibid.

Corporation was incorporated into the Wyeth Laboratories, Inc. In 2005 Wyeth Laboratories was acquired by Britain's largest drugs maker, GlaxoSmithKline.

In 1889 Donegal Mutual Insurance Company, formerly Donegal and Conoy Mutual Fire Insurance Company, established on West Market Street in Marietta. During 1960-1961 Donegal built their national headquarters in Colonial Revival style campus on River Road Pennsylvania Route 441 (PA 441).<sup>83</sup>

In 1893 The Columbia and Donegal Electric Railway (C&D), later purchased by The Pennsylvania Traction Company which was acquired by the Conestoga Traction Company (1899) was chartered to build a trolley car line connecting the four miles between Columbia and Marietta and building the Chickies Rock Park. The wooden cars, painted bright blue with yellow trim, were purchased from J. G. Brill Car Company (1868-1954) Philadelphia and the electric lines were installed by Westinghouse Electric Company (1886) Pittsburgh. Trolley tickets were purchased at the Libhart Drug Store.<sup>84</sup>

During 1917-1918 the United States declared war on Germany on 6 April 1917 more than two and a half years after the start of the First World War. Before entering the war, the U. S. remained neutral although it was an important supplier to Great Britain and the Allied Powers. The U. S. made its major contributions supplying raw material for the war effort. The U. S. military established the Marietta Holding and Reconsignment Point along the Susquehanna River. The primary mission was to receive and store Quartermaster, Ordinance, Medical, Engineer, and Signal Corps supplies until east coast ports were in a position to receive and ship materials overseas.<sup>85</sup>

During the Second World War, in 1941 the U. S. military expanded the Marietta Holding and Reconsignment Point to accommodate supplying the Lend Lease Act. In March 1941 Lend Lease was enacted distributing food, oil, warships, warplanes, and weaponry. In December 1941, four days after the Japanese attack on Pearl Harbor and the United States, the U. S. Congress declared war against the Japanese Empire. Nazi Germany declared war against the U. S. in response to what was claimed to be a series of provocations by the United States when it was still officially neutral during the Second World War. The United States declared war on Germany.<sup>86</sup>

During this time, 1942-1945 there was an expansion of the Marietta Holding and Reconsignment Point which is officially designated as the Marietta Transportation Corps Depot. The depot encompassed over eight million square feet, over 400 acres, and employed more than 800 civilians in addition to military personnel.<sup>87</sup>

In 1947 Machinecraft, Inc. was established manufacturing automatic food shaping machines for mass production of hamburgers and French fries. The hydraulic valves for the first two air craft carriers built during the Second World War were designed and manufactured by Machinecraft. This technology allowed planes to be kept on an even keel during take-off and landing on the decks of the ships.<sup>88</sup>

In 1952 Texas Eastern Transmission Corporation built a natural gas compressor two miles west of the Marietta Air Force Station. This compressor station moves natural gas destined for markets in Philadelphia and New York.<sup>89</sup>

Between 1953-1955 the Transportation Material Command was established at the Marietta Transportation Corps Depot with the mission of supply control, cataloging, procurement, mobilization planning, and standardization and production engineering. In 1955 Marietta Transportation Corps Depot was transferred from the U. S. Army to the U. S. Air Force which created air station with the primary functions of receipt, storage, shipment, and disposal of Air Force material and equipment.<sup>90</sup>

---

<sup>83</sup> Landis, John C., Candlelight Tours of Marietta 1966 to 2015 (Landisville, PA: Yurchak Printing, Inc, 2015).

<sup>84</sup> Marietta Sesquicentennial Souvenir Booklet, (Marietta, PA: August 4, 1962).

<sup>85</sup> Ibid.

<sup>86</sup> Ibid.

<sup>87</sup> Ibid.

<sup>88</sup> Ibid.

<sup>89</sup> American Oil & Gas Historical Society. Big Inch Pipelines of WWII" aoghs.org <https://aoghs.org/petroleum-in-war/oil-pipelines/> (accessed May 23, 2019).

<sup>90</sup> Wardlow, Chester, Center of Military History. "The Transportation Corps: Responsibilities, Organization, and Operations" history[https://history.army.mil/html/books/010/10-19/CMH\\_Pub\\_10-19.pdf](https://history.army.mil/html/books/010/10-19/CMH_Pub_10-19.pdf) (accessed May 23, 2019).

In 1955 the United States Aluminum Corporation of Pennsylvania USALCO is established. Rectangular twenty-five pound “ingots” smelted from scrap aluminum were produced to make castings for automotive automatic transmissions, pistons, aluminum fry pans, and products for national defense purposes.<sup>91</sup>

In May 1957, New Jersey Shell Casting Corporation was organized and operated until 1961 as a shell molding foundry. The corporation existed under the laws of the State of New Jersey from 1957 to 1979 because Joe Nagy lived in New Jersey at the time of incorporation. In May 1957, the original one room block building on South Decatur Street in Marietta, PA was rented from the U.S. Expansion Bolt Company. On December 9, 1965, New Jersey Shell Casting Corporation purchased the block building from the U.S. Expansion Bolt Company. The original size of the building was 2,700 square feet. Due to the growing needs of the business, the foundry has been expanded over the years and currently houses over 18,000 square feet under roof. In 1962, the business was converted to a non-ferrous brass, bronze and aluminum green sand-molding foundry and remains as such today<sup>92</sup>

In the 1970s, a large part of the Marietta Transportation Corps Depot became the Armstrong World Industries Ceiling Manufacturing Plant. Currently part of the Marietta Transportation Corps Depot is owned by the General Services Administration (GSA). The GSA portion of the site is used for the storage of a variety of ores including manganese, chrome, beryl, zinc, and lead in the form of ingots. Access to both portions of the site is restricted by perimeter fencing which has either locked gates or is guarded. The current property owners are: AWI (302.4 acres); GSA (67.5 acres); AAAA Enterprises, Inc. (39.9 acres); PADOT (23.27 acres); Richard C. Yunginger (36.40 acres); and Frederick W. Bushong et ux (9.6 acres).<sup>93</sup>

This property is a superfund site which means the federal government, through the Environmental Protection Agency, has identified parties responsible for hazardous substances releases to the environment and has either compelled them to clean up the sites or it may undertake the cleanup on its own using the Superfund (a trust fund) and costs recovered from polluters by referring to the U. S. Department of Justice.<sup>94</sup> Sites managed under this program are referred to as “Superfund” sites established as the Comprehensive Environmental Response, Compensation, and Liability Act of 1980. The EPA identifies sites such as Marietta Transportation Corps Depot because they pose or had once posed a potential risk to human health and/or the environment due to contamination by one or more hazardous wastes. Marietta Transportation Corps Depot is currently registered as an Active superfund site by the EPA. However, it is not on the NPL (National Priorities List), which means the EPA does not consider it one of the nation's most hazardous waste sites.<sup>95</sup>

Established in 1970, Lawn Equipment Parts Company (LEPCO) is a family-owned and operated wholesale distributor of quality outdoor power equipment, parts, and accessories. Originally, LEPCO operated as an after-market parts distributor to independent lawn equipment dealers. Today, we handle nine major brands of power equipment and continue to supply aftermarket parts to over 1,300 dealers in the northeast region. Over the years, LEPCO has continued to grow, becoming one of the preferred distributors in the industry. Maintaining their reputation for outstanding customer service to its dealers continues to be their everyday focus. LEPCO's continued goal is to provide quality products and services to groups of independent dealers who, in turn, can provide a higher level of service and support to the end-users for all the brands represented. They sell exclusively to retail dealers in Connecticut, Delaware, Maine, Maryland, Massachusetts, New Hampshire, New Jersey, New York, Pennsylvania.<sup>96</sup>

In 1981, Rich Kushner opened Swedish Motors at 7 North Decatur Street, advertising that his employees had a unique knowledge of Swedish cars and foreign parts. His niche was more than enough to preoccupy his

<sup>91</sup> USALCO, “About Us” [usalco.com https://www.usalco.com/company/history/](https://www.usalco.com/company/history/) (accessed May 23, 2019).

<sup>92</sup> New Jersey Shell Casting Corporation. “Our History” [njshell.com http://njshell.com/history.htm](http://njshell.com/history.htm) (accessed May 29, 2019).

<sup>93</sup> ProPublica. “Marietta Air Force Station” [projects.propublica.org https://projects.propublica.org/bombs/installation/PA39799F1509009799](https://projects.propublica.org/bombs/installation/PA39799F1509009799) (accessed May 23, 2019).

<sup>94</sup> Wikipedia. “Superfund” [Wikipedia.org https://en.wikipedia.org/wiki/Superfund](https://en.wikipedia.org/wiki/Superfund) (accessed May 23, 2019).

<sup>95</sup> GovInfo. “Hazardous Waste: Information on Potential Superfund Sites” [govinfo.gov https://www.govinfo.gov/content/pkg/GAOREPORTS-RCED-99-22/html/GAOREPORTS-RCED-99-22.htm](https://www.govinfo.gov/content/pkg/GAOREPORTS-RCED-99-22/html/GAOREPORTS-RCED-99-22.htm) (accessed May 23, 2019).

<sup>96</sup> LEPCO. “About Us” [lepcos.com http://lepcos.com/about-us/](http://lepcos.com/about-us/) (accessed June 13, 2019)

technicians, some of whom have been with Rich since their service doors opened. Today, Swedish Motors offers the same reliable auto service while also selling and restoring preowned and vintage vehicles.<sup>97</sup>

Jagtrux, Inc, a contract/common carrier for tractor trailer transportation was incorporated in 1982 by Jim Germak. In 1998 Jagtrux, Inc. purchased an abandoned locomotive repair shop in Marietta, originally built in 1942, and completely renovated the building. Eventually Jagtrux acquired surrounding property and expanded into a seventy-five-acre facility with a full-service shop, cross dock facilities, and secure trailer storage lots. Germak established a strong relationship with Armstrong World Industries becoming a Core Carrier for Armstrong's facilities in Marietta.<sup>98</sup>

B.N. Excavating is a second-generation family business, specializing in residential, commercial and agricultural excavating services. Bob Nafziger started the company in 1986, after working as an employee for an excavating company in the area for over 15 years. Bob started the company with a single backhoe, dump truck and track loader and steadily built relationships with area contractors to build the business. Today, B.N. Excavating has grown from a small, one-man operation to a trusted leader in the excavating industry throughout Lancaster County and beyond. Headquartered in Marietta, PA, the company is now home to an experienced team of full-time excavators and a diverse line of professional excavation equipment that can meet the excavating needs of small businesses, home owners and agricultural operations.<sup>99</sup>

R & T Mechanical, Inc. was founded in 1987. R & T Mechanical is a contracting company which provides services including plumbing, heating, air-conditioning, and other similar work. R & T is in the East Donegal Industrial Park along with several other companies and organizations including Hess Auctioneers, LLC, Jaxtrux, Inc, Vanguard Modular Building Systems., LLC, and Hiltz Propane.

Founded by Matt Hiltz, a mechanical engineer who has many years of experience in the propane industry, Hiltz Propane Systems is family-owned and operated and comprised of a dedicated crew of propane installation and repair professionals. Specializing in complete turnkey propane system design and installation services, Matt and his dedicated crew bring extensive experience to the table in the areas of LPG system design, engineering, plant connection, fitting and maintenance services.<sup>100</sup>

Established in 1998, Vanguard Modular Building Systems, LLC acquired Schiavi Leasing Corp., the predominate modular builder and regional supplier of modular classrooms in Maine since 1986, as a wholly owned subsidiary. Vanguard successfully expanded on Schiavi's already extensive modular construction capabilities to include distinctively engineered and designed multi-story permanent modular buildings, while retaining the requirements for temporary modular space of all sizes and configurations. Vanguard's experienced modular sales and construction management teams are in offices throughout the Atlantic and Gulf Coasts, enabling us to effectively serve more than 20 states. They provide construction management services and quality temporary and permanent modular buildings to the education, commercial, construction, healthcare, oil and gas, government, and religious markets.<sup>101</sup>

Hess Auctioneers, LLC began operations in June 2007 when John Hess (Hess Auction Group), Phil and Roger Garber (GFI Transport), and Jim Germak (Jagtrux), recognized a need for public truck, trailer and equipment auction and consignment auction in the Mid-Atlantic region. Since the company is conveniently located close to Harrisburg, Lancaster and York, the current site is convenient, secure and allows consignors to bring their equipment to the site in advance of the auctions, so buyers can preview the inventory.<sup>102</sup>

Lancaster Recumbent opened in December 2014, and today, the shop has over 75 different types of recumbent cycles – and continues to grow. The shop moved to a new location at 103 West Market Street in March 2018 – a larger space (for more cycles) located a block and a half off the

<sup>97</sup> Swedish Motors. "About Us" [swedishmotors.com http://www.swedishmotors.com/about-swedish-motors](http://www.swedishmotors.com/about-swedish-motors) (accessed May 29, 2019).

<sup>98</sup> Jagtrux. "Our Story" [jagtrux.com http://jagtrux.com/dotnetnuke/AboutUs/OurStory.aspx](http://jagtrux.com/dotnetnuke/AboutUs/OurStory.aspx) (accessed May 23, 2019).

<sup>99</sup> B.N. Excavating. "About Us" [bnexcavating.com https://www.bnexcavating.com/about-us.php](https://www.bnexcavating.com/about-us.php) (accessed May 29, 2019).

<sup>100</sup> Hiltz Propane Systems. "About Us" [hiltzpropanesystems.com https://www.hiltzpropanesystems.com/about-us/](https://www.hiltzpropanesystems.com/about-us/) (accessed June 13, 2019)

<sup>101</sup> Vanguard Modular Building Systems. "Vanguard History" [vanguardmodular.com https://vanguardmodular.com/vanguard-history/](https://vanguardmodular.com/vanguard-history/) (accessed June 13, 2019).

<sup>102</sup> Hess Auctioneers. "About Us" [hessauctioneers.com https://www.hessauctioneers.com/about-us/](https://www.hessauctioneers.com/about-us/) (accessed May 29, 2019).

Northwest Lancaster County River Trail in Marietta, PA. Lancaster Recumbent offers rides for all of life's cycles, new and used semi-recumbent and recumbent cycles, offers personal customizations and adaptations to meet your specific needs. Lastly, they offer repairs and maintenance for practically anything with wheels – from recumbent to traditional upright cycles, from strollers to wheelchairs and walkers.<sup>103</sup>

In September 2017, after seven, sometimes controversial, years in the making, Pennsylvania's first large-scale commercial soybean-processing facility was opened at 1609 River Road in Conoy Township. Perdue Agribusiness's new \$60 Million soybean-processing plant has been long touted by Perdue as a boon to farmers from Lancaster County and the region, saving them transportation costs. The plant has received strong endorsement from local agriculture and business groups.<sup>104</sup> The state gave Perdue an \$8.75 million grant to build the plant in Pennsylvania. With processed water coming from the adjacent Lancaster County Waste-To-Energy Facility on the same campus, as well as steam, Perdue AgriBusiness said the plant is the most environmentally friendly soybean plant in the country. Perdue said the facility would have the lowest rate of hexane emissions of any soybean-processing plant in the United States. The plant will process soybeans and turn them into soymeal for livestock and dairy farms. The plant has 35 permanent employees. Perdue said its construction generated 150 jobs and the plant will spawn 500 jobs in crop production and transportation. Gov. Tom Wolf said, "This plant is a game changer for farmers in Pennsylvania, opening new lanes of supply, new markets, and new opportunities in the commonwealth's agricultural economy."<sup>105</sup>

Texas Eastern Pipeline (TETCo) is a major natural gas pipeline which brings gas from the Gulf of Mexico coast in Texas and Louisiana up through Mississippi, Arkansas, Tennessee, Missouri, Kentucky, Illinois, Indiana, Ohio, and Pennsylvania to deliver gas in the New York City area. It is one of the largest pipeline systems in the United States. It is owned by Enbridge. Enbridge connects people to the energy they need to help fuel their quality of life. In the United States alone, more than two million miles of pipelines deliver petroleum and natural gas products. Every year, Enbridge invests in the latest technology and training to meet the high environmental and safety standards our neighbors expect, and to keep pipelines the safest, most efficient and most reliable way to move energy resources.<sup>106</sup> Marietta has its own Compressor Station off River Road and has a direct connection to this major national phenomenon.

### **Biographical Significance & Historic Purpose of Property:**

124 West Front Street has been a part of the Marietta community for over 170 years and has seen more history, events, and people than what anyone alive today could know. As with many houses and other buildings, memories of the people who once walked within and lived their own lives have been lost to history forever. Others have been enshrined in the archives as living proof of the people who came before, giving us a small glimpse into the past. The people of Marietta are the history of their community, and houses such as 124 West Front Street help to represent and tell the story of the people.

The oldest deed recorded shows Isaac Reinhart giving the property to John J. Libhart on April 3<sup>rd</sup>, 1848. How Reinhart came into possession of the property and the deed is unknown, though further research could provide a clearer answer to the property's origin.

John J. Libhart was a civic leader in the Marietta community. He was the President of the School Directors (also called a school board)<sup>107</sup>, and the treasurer of two beneficial societies – The Harmony and The Pioneer<sup>108</sup> –

<sup>103</sup> Lancaster Recumbent. "About Us" [lancasterrecumbent.com](https://lancasterrecumbent.com/about-us/) <https://lancasterrecumbent.com/about-us/> (accessed May 29, 2019).

<sup>104</sup> Lancaster Online. "After long fight, Perdue to open \$60M soybean-processing plant Monday in Conoy Township" [lancasteronline.com](https://lancasteronline.com/news/local/after-long-fight-perdue-to-open-m-soybean-processing-plant/article_a709d652-9f98-11e7-88a9-238ddeda959e.html) [https://lancasteronline.com/news/local/after-long-fight-perdue-to-open-m-soybean-processing-plant/article\\_a709d652-9f98-11e7-88a9-238ddeda959e.html](https://lancasteronline.com/news/local/after-long-fight-perdue-to-open-m-soybean-processing-plant/article_a709d652-9f98-11e7-88a9-238ddeda959e.html) (accessed May 29, 2019).

<sup>105</sup> Lancaster Online. "10 facts about the new \$60M Perdue soybean plant in Conoy Township opening today" [lancasteronline.com](https://lancasteronline.com/news/local/facts-about-the-new-m-perdue-soybean-plant-in-conoy/article_a062b1b8-a216-11e7-8cac-d7d57ce2f935.html) [https://lancasteronline.com/news/local/facts-about-the-new-m-perdue-soybean-plant-in-conoy/article\\_a062b1b8-a216-11e7-8cac-d7d57ce2f935.html](https://lancasteronline.com/news/local/facts-about-the-new-m-perdue-soybean-plant-in-conoy/article_a062b1b8-a216-11e7-8cac-d7d57ce2f935.html) (accessed May 29, 2019).

<sup>106</sup> Wikipedia. "Texas Eastern Transmission Pipeline" [wikipedia.org](https://en.wikipedia.org/wiki/Texas_Eastern_Transmission_Pipeline) [https://en.wikipedia.org/wiki/Texas\\_Eastern\\_Transmission\\_Pipeline](https://en.wikipedia.org/wiki/Texas_Eastern_Transmission_Pipeline) (accessed June 13, 2019)

<sup>107</sup> *The Weekly Mariettian* February 2, 1861.

<sup>108</sup> *Ibid.*

before being elected as the president of The Pioneer in 1861.<sup>109</sup> He was later elected to represent the Marietta borough in a county convention,<sup>110</sup> was the President of the Fruit Growers Association,<sup>111</sup> and the treasurer of the Young Men's Christian Association.<sup>112</sup> Apart from his civic leadership roles, Libhart was a farmer and businessman. During the Seventh Annual Exhibition of the Farmer's and Gardener's Society of East Donegal in 1867, Libhart was reported to have grown thirty-three different pear varieties "embracing the most highly esteemed fall and winter kinds."<sup>113</sup> Libhart also sold "Dr. Brunon's Concentrated Remedies for Delicate Diseases" – which were mostly creams and ointments to help with sexually transmitted diseases or "any constitutional derangement of the system brought on by the unrestrained indulgence of the passions" – and was the only person in Marietta whom one could purchase these remedies from.<sup>114</sup> He also sold "Phoenix Pectoral; or, Compound Syrup of Wild Cherry and Seneka Snake Root" which was said to "cure the diseases of the throat & lungs, such as colds, coughs, croup, asthma, bronchitis, catarrh, sore throat, hoarseness, whooping cough, &c."<sup>115</sup> The next owners seen are James Squibbs, Jr., when he was in 7<sup>th</sup> grade at Beahm Junior High on the "B" Honor roll,<sup>116</sup> and Anna S. Gible, who passed on January 13, 1977 at 9:40 am.<sup>117</sup>

Years passed and at the time of this writing the house belongs to FHP States, LLC. Apart from the aforementioned stories, most of the history of these homeowners has been lost to time. Though, this shows the historical significance of the house. The house stands as a monument to those who came before, to a time where life was much different than now. The federal style of the house stands for the founding of the United States, for freedom, for democracy. It represents the housing of the ordinary person. The story of John J. Libhart – for whom the house is named – is the story of someone who was an active participant in the community, a good neighbor to the town, and the idea anyone can make a difference. Buildings are designed with a meaning, a purpose greater than just an aesthetic appeal. The Reinhart-Libhart House is a monument to the American people and their legacy.

---

<sup>109</sup> Ibid.

<sup>110</sup> *The Mariettian* June 13, 1863.

<sup>111</sup> Ibid.

<sup>112</sup> *The Mariettian* April 20, 1867.

<sup>113</sup> *The Mariettian*, September 24, 1864, Image 1.

<sup>114</sup> *The Weekly Mariettian*, November 03, 1860, Image 4.

<sup>115</sup> *The Mariettian*, September 23, 1865, Image 4.

<sup>116</sup> *Susquehanna Times*, November 26, 1980.

<sup>117</sup> *Susquehanna Times*, January 19, 1977.



### Historic & Contemporary Photos of Property:



118



119

<sup>118</sup> <https://lancasterpa.devnetwedge.com/parcel/view/4208353700000/2022>

<sup>119</sup> Photo by Jackson Lager.



120

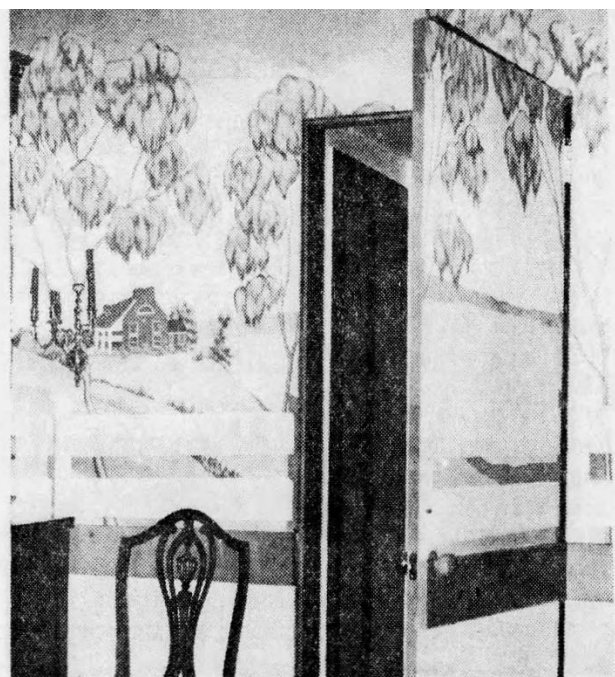


*Annie, John Libhart's second wife, and two daughters, Kate and Annie. This is one of Libhart's most elegant works. This portrait was painted in 1853—signed and dated. Owned by John H. Libhart. Marred areas on left side are due to reflected light.*

121

<sup>120</sup> Ibid.

<sup>121</sup> Newspapers.com



Three walls of the dining room are decorated by a mural painted by Henry Libhart, depicting landscapes of the Susquehanna Valley. On this side of the wall, a door opens into the library.

122