



# Living at or Commuting to Etown

Hear from Residence Life, Commuter Engagement &  
Campus Safety

## Summer Communications

- July 1 and August 4

## Roommates and Mediations

- Roommate agreement (RAs can assist students)
- RAs assist with mediations during the year
- Students need to contact us with their concerns

We look forward to welcoming you on [check-in day](#)

New Fall Athletes	August 15 10:15 am – 12 pm
New Momentum and Bonner Students	August 20 9-11 am
New Honors Program Students	August 20 1-3 pm
New Students	August 22 9 am – 1 pm

## Room Inspection Reports

- Completed by Residence Life prior to student move-in
- Students review and can submit any comments by deadline

- Learn more about our [residence halls](#)
  - 1st year students are housed in Founders and Schlosser
  - We provide [specific furniture](#) that must remain in the room.
  - There are no elevators in the residence halls, but there will be many volunteers to help you move in.
  - Label your belongings with your building & room number before moving in.
  - Be aware of [what you should bring](#) (and what you should not bring)

# Residence Life: Living on Campus



- Resident Assistants (RAs) role
- Area Coordinators
- Residence Life staff have an on-call rotation
- College covers EMS, MESA (Municipal Emergency Services Authority) fee for residential students

We look forward to welcoming you on [check-in day](#) – **August 22**

- There are many spaces on campus for commuters to use between classes (to study or relax).
- There are specific [parking areas](#) for commuter students.
- You'll meet other commuting students during August Orientation.

- Campus Safety is available 24/7/365. [Security@etown.edu](mailto:Security@etown.edu)
- Safety escorts are provided from any location on campus to another location on campus (students return to campus at night & would like a safety escort from the parking lot to their residence hall, for example)
- Train and airport transportation is provided to and from (request thru Campus Safety at least 24 hours in advance)

- Parking regulations are enforced by Campus Safety
- EC Alert is our campus emergency notification system. Students will update emergency contact information each semester during their preliminary check-in, and this information will be used for our EC Alert system
- Livesafe app allows students to stay informed and report tips (supports photos and video attachments)



- CS Team available 24/7

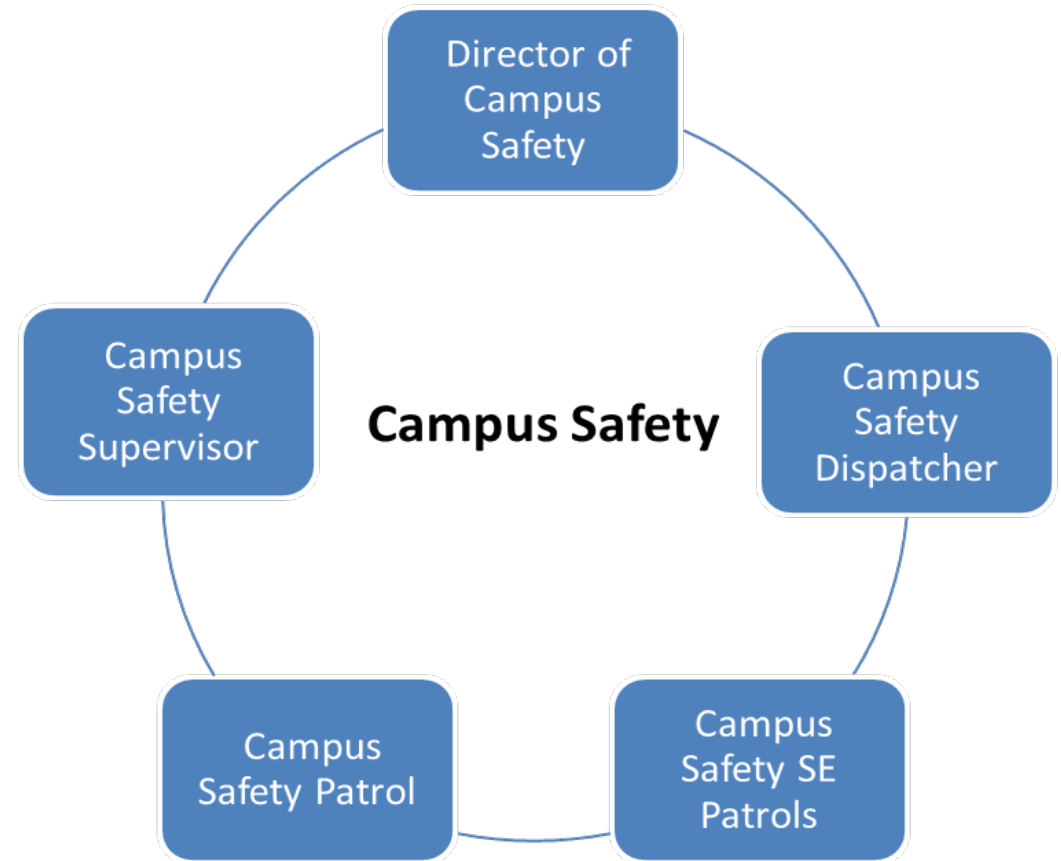
## HOW TO REPORT AN EMERGENCY

Contact Campus Safety

**Dial 717-361-1111**

Non emergency

**Dial 717-361-1264**





2:15 pm: An Insider's Guide to Etown, Leffler Chapel  
\*Meet up with your student & attend together

3-4 pm: Schedule Questions, Leffler lobby  
Get your ID picture taken, Leffler Chapel, McCormick Gallery  
Momentum program meeting, Leffler Chapel  
Visit the College Store, Brossman Commons