



The Etown Community

Campus & Community Life

Tara Hoover, director of residence life

Scan this QR code for closed captioning:



Residency Requirement

Undergraduate students required to live on-campus for 4 years unless approved to commute, 25+, or married / have dependents

Summer Communications

- July 1
- August 4

Roommates and Mediations

- Roommate agreement (RAs assist students)
- RAs assist with mediations during the year
- Students need to contact us with their concerns

We look forward to welcoming you on [check-in day](#)

New Fall Athletes	August 16 2:30 pm – 4 pm
New Momentum and Bonner Students	August 19 9 - 11 am
New Honors Program Students	August 19 11 am - 1 pm
New Students	August 21 9 am – 1 pm

Room Inspection Reports

- Completed by Residence Life prior to student move-in
- Students review and can submit any comments by deadline

Learn more about our [residence halls](#)

- 1st year students are housed in Founders and Schlosser
- We provide [specific furniture](#) that must remain in the room.
- There are no elevators in the residence halls, but there will be many volunteers to help you move in.
- Label your belongings with your building & room number before moving in.
- Be aware of [what you should bring](#) (and what you should not bring)

Residence Life: Living on Campus

- Resident Assistants (RAs) role
- Residence Hall Directors
- Residence Life staff have an on-call rotation
- College covers EMS, MESA (Municipal Emergency Services Authority) fee for residential students

We look forward to welcoming you on [check-in day](#) – **August 21**

- There are many spaces on campus for commuters to use between classes (to study or relax).
- There are specific [parking areas](#) for commuter students.
- You'll meet other commuting students during August Orientation.

- CS Team available 24/7



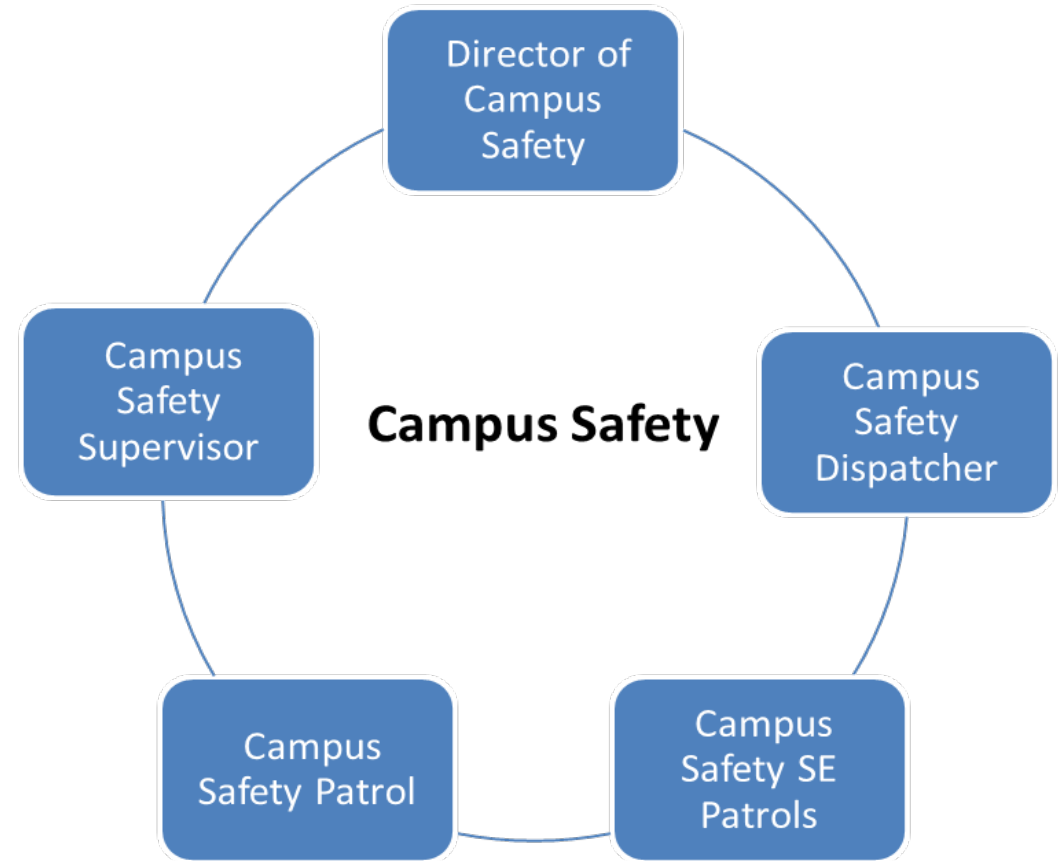
HOW TO REPORT AN EMERGENCY

Contact Campus Safety

Dial 717-361-1111

Non emergency

Dial 717-361-1264



- Safety escorts are provided from any location on campus to another location on campus (students return to campus at night & would like a safety escort from the parking lot to their residence hall, for example)
- LiveSafe app allows students to stay informed and report tips (supports photos and video attachments)

- [Train and airport transportation](#) is provided to and from (request thru Campus Safety at least 24 hours in advance)
- [Parking regulations](#) are enforced by Campus Safety
- [EC Alert](#) is our campus emergency notification system. Students will update emergency contact information each semester during their preliminary check-in, and this information will be used for our EC Alert system

- Small-town feel with community events throughout the year
- Local shops downtown within walking distance
- Students will walk downtown together during August Orientation's Blue Jay Walk

<https://www.etown.edu/about/region.aspx>



12-1:25 pm – Lunch & Explore

Visit the **Info Fair** to ask questions, learn about resources & meet Etown staff, *Brossman Commons*

Talk to the Academic Advising team about **Schedule Questions**, *Brossman Commons, 2nd floor*

Get help completing your **Student Health forms**, *Brossman Commons, 2nd floor*

Tour **Founders Residence Hall**, *leave from Brossman Commons, 1st floor*

Visit the **College Store**, *Brossman Commons, 1st floor*

Enjoy **lunch** sometime during this timeframe – *Brossman Commons, 2nd floor*

1:30 pm – Families, choose a Concurrent Session to attend

(students will gather and get to know their peers)

2:15 pm – An Insider's Guide to Etown (everyone, in the Chapel)